

RoHS Compliant

THIS DRAWING CONTAINS INFORMATION THAT IS PROPRIETARY TO ZDT TECHNOLOGY, AND SHOULD NOT BE USED WITHOUT WRITTEN PERMISSION

REV	ECN No.	DATE	REMARK
A	NEW	2020.09.01	NEW RELEASE

NOTE:

- Electrical Characteristics:
 - 1-1: Current Rating: 5A For Pin(A4,A9,B4,B9)
1.25A For Pin(B5)
0.25A For Others Pin
 - 1-2: VOLTAGE RATING:20V
 - 1-3: Insulation Resistance: 100MΩ Min.
 - 1-4: Contact Resistance:
VBUS & GND PINS AND OTHER PINS: 40mΩ/PIN MAX.
SHIELD:50mΩ/MAX.
SHIELD:LLCR MAX. CHANGE OF ALL PINS: 10mΩ.
 - 1-5: Dielectric Withstanding Voltage: 100V/AC 1Minute
- Mechanical Characteristics:
 - Insertion Force: 5~20N
 - Extraction Force: Initial: 8~20N
 - After durability: 6~20N
 - Durability :10000 Cycles
- Operating Temperature: -25°C TO +85°C

4. 防水等级IPX4

5.注: 带“*”号的为重点管控尺寸

“⊙”为尺寸编码

6.PART NUMBER CODE:(产品料号)

CF272-16 X X XX X-68
(1) (2)(3) (4)

(1) HOUSING MATERIAL:

L:LCP

(2) HOUSING COLOR:

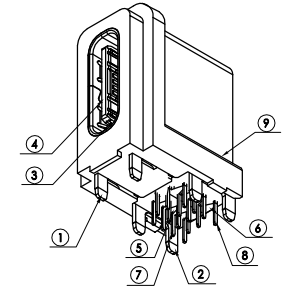
B:BLACK

(3) CONTACTS PLATED:

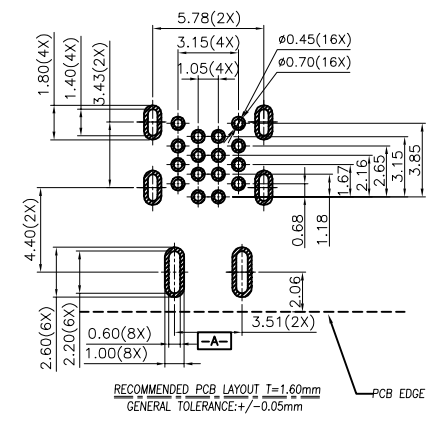
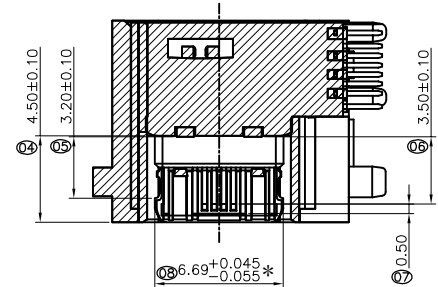
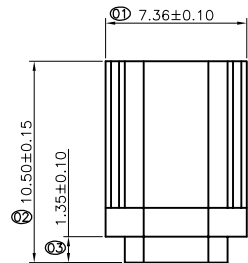
11:全金1u”

(4) PACKING OPTIONS

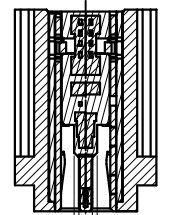
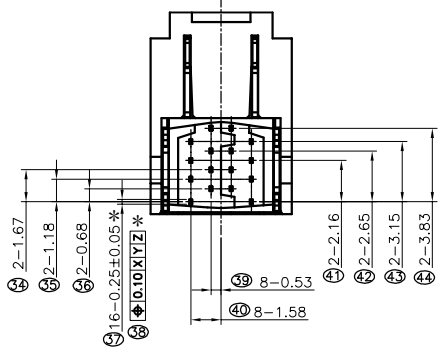
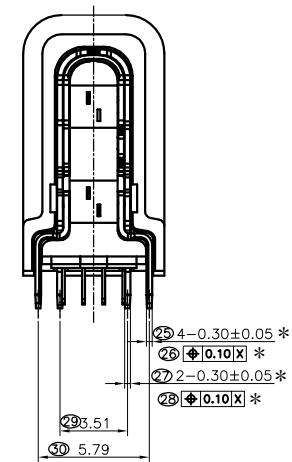
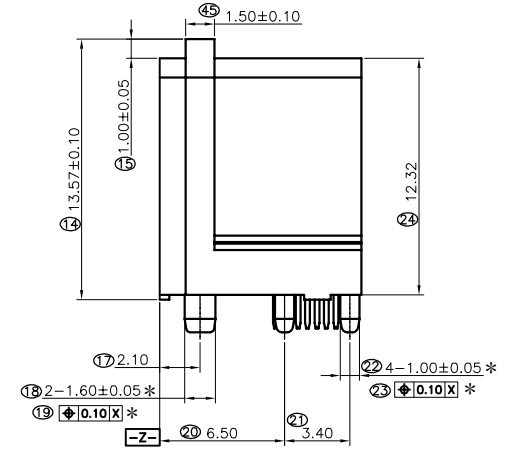
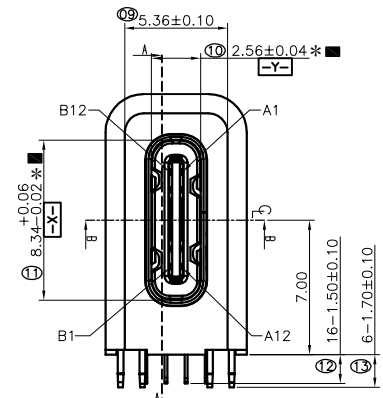
T:TRAY



⑨	Jacket	1	LCP E130i,UL94 V-0	Black
⑧	Up Terminal	12	C7025-TM02,T=0.15	Contact Area:Pd Ni 0.30um Min, Au Solder Area:Au 0.05um Min Ni 2.0-5.0um over all
⑦	Down Terminal	12		
⑥	Up Moding	1	LCP E130i,UL94 V-0	Black
⑤	Down Moding	1		
④	Second Moding	1		
③	中夹片	1	SUS301-H,T=0.20	Ni 1.0-5.0um Underplating
②	内壳	1	SUS304-3/4H,T=0.30	Ni 1.0-5.0um Underplating
①	外壳	1	SUS304-3/4H,T=0.30	Ni 1.0-5.0um Underplating
NO.	NAME	QT'Y	MATERIAL	PLATING



RECOMMENDED PCB LAYOUT T=1.60mm
GENERAL TOLERANCE: +/-0.05mm



SECTION B-B

PIN ASSINGMENT											
A1	A2	A3	A4	A5	A6	A7	A8	A9	A10	A11	A12
GND	\	\	VBUS	CC1	Dp1	Dn1	SBU1	VBUS	\	\	GND
GND	\	\	VBUS	SBU2	Dn2	Dp2	CC2	VBUS	\	\	GND
B12	B11	B10	B9	B8	B7	B6	B5	B4	B3	B2	B1

PART NO.:		SEE THE PART NUMBER CODE	
QUALITY SYMBOL	0	GENERAL TOLERANCES (UNLESS SPECIFIED)	
	x.xxxx	± ---	
	x.xxx	± 0.10	
	x.xx	± 0.20	
	x.x	± 0.30	
▲	ANGULAR	± ---	

ZDT 深圳市中科兴达科技有限公司 SHENZHEN ZDT TECHNOLOGY CO., LTD		DRAWN BY SAM		DATE 2020.09.01	
TITLE Type C Female16Pin CH7.0防水 45W 侧立式		CHECKED BY JAY		DATE 2020.09.01	
DWG.NO. CF272-16-68		APPROVED BY JACKY		DATE 2020.09.01	
SHEET NO. 1 OF 1		DIMENSION STYLE MM ONLY		DESIGN UNITS METRIC	
SCALE 1:1		THIRD ANGLE PROJECTION		frame size: A4	