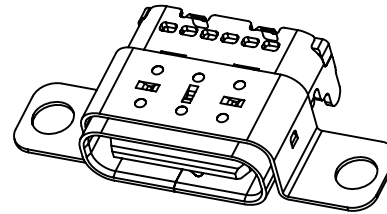
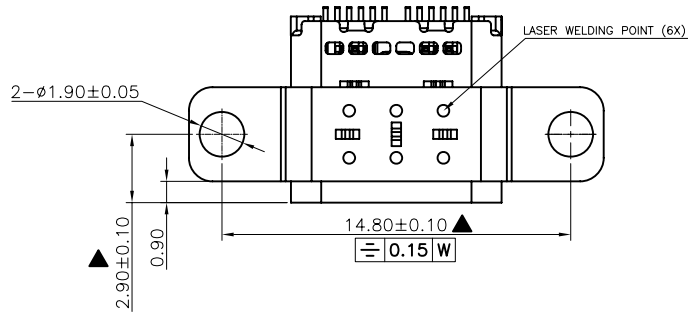


RoHS Compliant

THIS DRAWING CONTAINS INFORMATION THAT IS PROPRIETARY TO ZDT TECHNOLOGY, AND SHOULD NOT BE USED WITHOUT WRITTEN PERMISSION

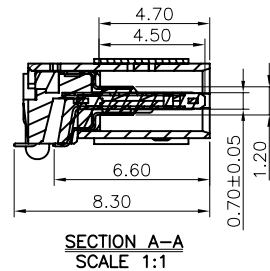
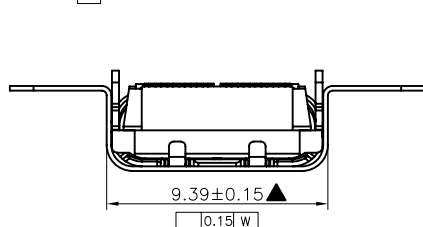
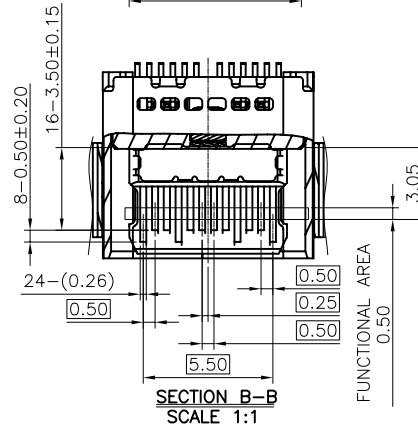
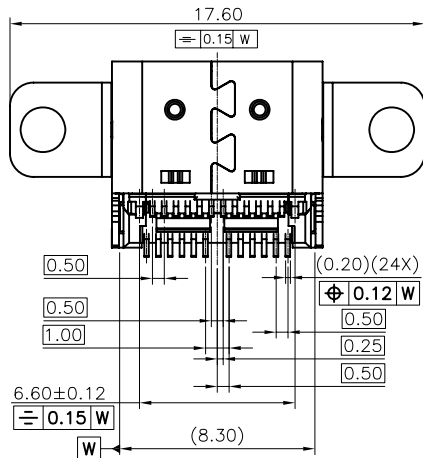
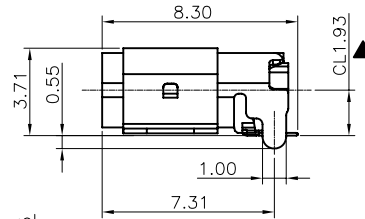
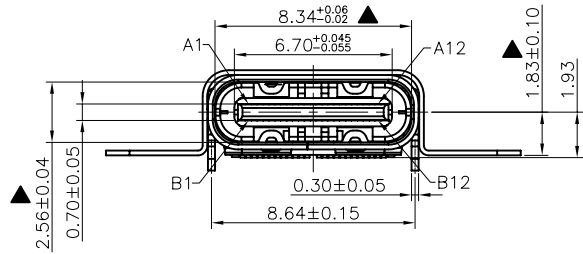
REV	ECN No.	DATE	REMARK
A	NEW	2020.03.15	NEW RELEASE



NOTE:

- MATERIAL SPECIFICATION:
  - HOUSING: HIGH TEMPERATURE RESISTANT PLASTIC, UL94 V-0.
  - CONTACTS: COPPER ALLOY
  - MID PLATE: STAINLESS STEEL
  - FRONT SHELL: STAINLESS STEEL
  - EMI PLATE: STAINLESS STEEL
  - TOP SHELL: STAINLESS STEEL
- PLATING SPECIFICATION:
  - CONTACTS:
    - Ni 50u" MIN. UNDER PLATED OVER ALL.
    - Au PLATED ON THE FUNCTIONAL AREA OF CONTACT. (GOLD PLATING THICKNESS FOLLOW THE P/N)
  - FRONT SHELL & TOP SHELL:
    - Ni 30u" MIN. UNDER PLATED OVER ALL.
  - SHIELD PLATE & EMI PLATE:
    - CLEAR ONLY
- MECHANICAL PERFORMANCE,
  - INSERTION FORCE: 0.5~2.0kgf.
  - REMOVAL FORCE: 0.8kgf~2.0kgf.
  - DURABILITY: 10000 CYCLES.
- ELECTRICAL PERFORMANCE,
  - CURRENT RATING: 5.0V VOLTAGE RATING: 5.0V
  - LLCR:
    - VBUS & GND PINS AND OTHER PINS: 40mΩ/PIN MAX.
    - SHIELD: 50mΩ/MAX.
    - LLCR MAX. CHANGE OF ALL PINS: 10mΩ.
  - INSULATION RESISTANCE: 100MΩ MIN
  - DIELECTRIC WITHSTAND VOLTAGE, AC 100V FOR 1 MINUTE.
- ENVIRONMENTAL PERFORMANCE:
  - OPERATING TEMPERATURE: -25°C~+85°C.
  - THE PEAK TEMPERATURE ON THE BOARD SHALL BE MAINTAINED FOR 10 SECONDS AT 260°C.
- COPLANARITY OF SMT PINS SOLDER TAIL IS 0.10 MAX. BEFORE REFLOW AND AFTER REFLOW

7.注: 带“▲”号的为重点管控尺寸



8. PART NUMBER CODE:  
 C F219 - 24 S L B XX R - 01  
 (1) HOUSING COLOR: BLACK  
 (2) CONTACTS PLATED: 12:接触镀金3u"焊接区域镀金1u"

PART NO.:  
 SEE THE PART NUMBER CODE

**ZDT** 深圳市中科兴达科技有限公司  
 SHENZHEN ZDT TECHNOLOGY CO., LTD

DRAWN BY: SAM DATE: 2020.03.15

QUALITY SYMBOL	0	0	0	0
	GENERAL TOLERANCES (UNLESS SPECIFIED)			
	x.xxxxx	±	---	
	x.xxx	±	0.10	
	x.xx	±	0.25	
x.x	±	0.30		
ANGULAR	±	---		

TITLE: USB CF DOUBLE 24PIN SMT WITH SCREW HOLE

CHECKED BY: JAY DATE: 2020.03.15

DWG. NO.: CF219-24-01 SHEET NO.: 1 OF 2

APPROVED BY: JACKY DATE: 2020.03.15

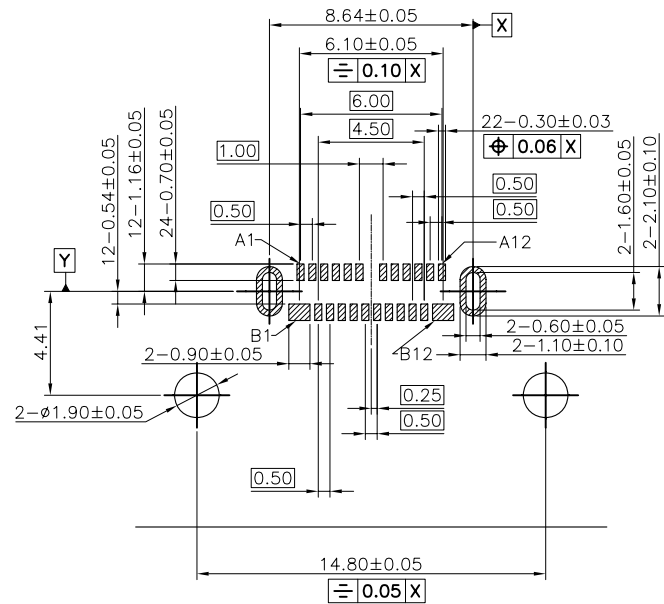
DIMENSION STYLE: MM ONLY DESIGN UNITS: METRIC SCALE: 1:1

THIRD ANGLE PROJECTION

RoHS Compliant

THIS DRAWING CONTAINS INFORMATION THAT IS PROPRIETARY TO ZDT TECHNOLOGY, AND SHOULD NOT BE USED WITHOUT WRITTEN PERMISSION

REV	ECN No.	DATE	REMARK
A	NEW	2020.03.15	NEW RELEASE



RECOMMENDED PCB LAYOUT(TOP VIEW)  
THICKNESS 0.8MM;DEFAULT TOLERANCE:±0.05

USB TYPE-C PIN ASSIGNMENTS

PIN NUMBER	SIGNAL NAME	PIN NUMBER	SIGNAL NAME
A1	GND	B12	GND
A2	TX1+	B11	TX1+
A3	TX1-	B10	TX1-
A4	Vbus	B9	Vbus
A5	CC1	B8	SBU2
A6	Dp1	B7	Dn2
A7	Dn1	B6	Dp2
A8	SBU1	B5	CC2
A9	Vbus	B4	Vbus
A10	RX2-	B3	TX2-
A11	RX2+	B2	TX2+
A12	GND	B1	GND

PART NO.: SEE THE PART NUMBER CODE		深圳市中兴兴达科技有限公司 SHENZHEN ZDT TECHNOLOGY CO.,LTD		DRAWN BY SAM	DATE 2020.03.15
QUALITY SYMBOL 0 0 0 0 0	GENERAL TOLERANCES (UNLESS SPECIFIED)		TITLE USB CF DOUBLE 24PIN SMT WITH SCREW HOLE		
	x.xxxx	± ---	DWG.NO.	SHEET NO.	
	x.xxx	± 0.10	CF219-24-01	2 OF 2	
	x.xx	± 0.25	DIMENSION STYLE	DESIGN UNITS	SCALE
	x.x	± 0.30	MM ONLY	METRIC	1:1
ANGULAR	± ---	APPROVED BY JACKY			DATE 2020.03.15
THIRD ANGLE PROJECTION					