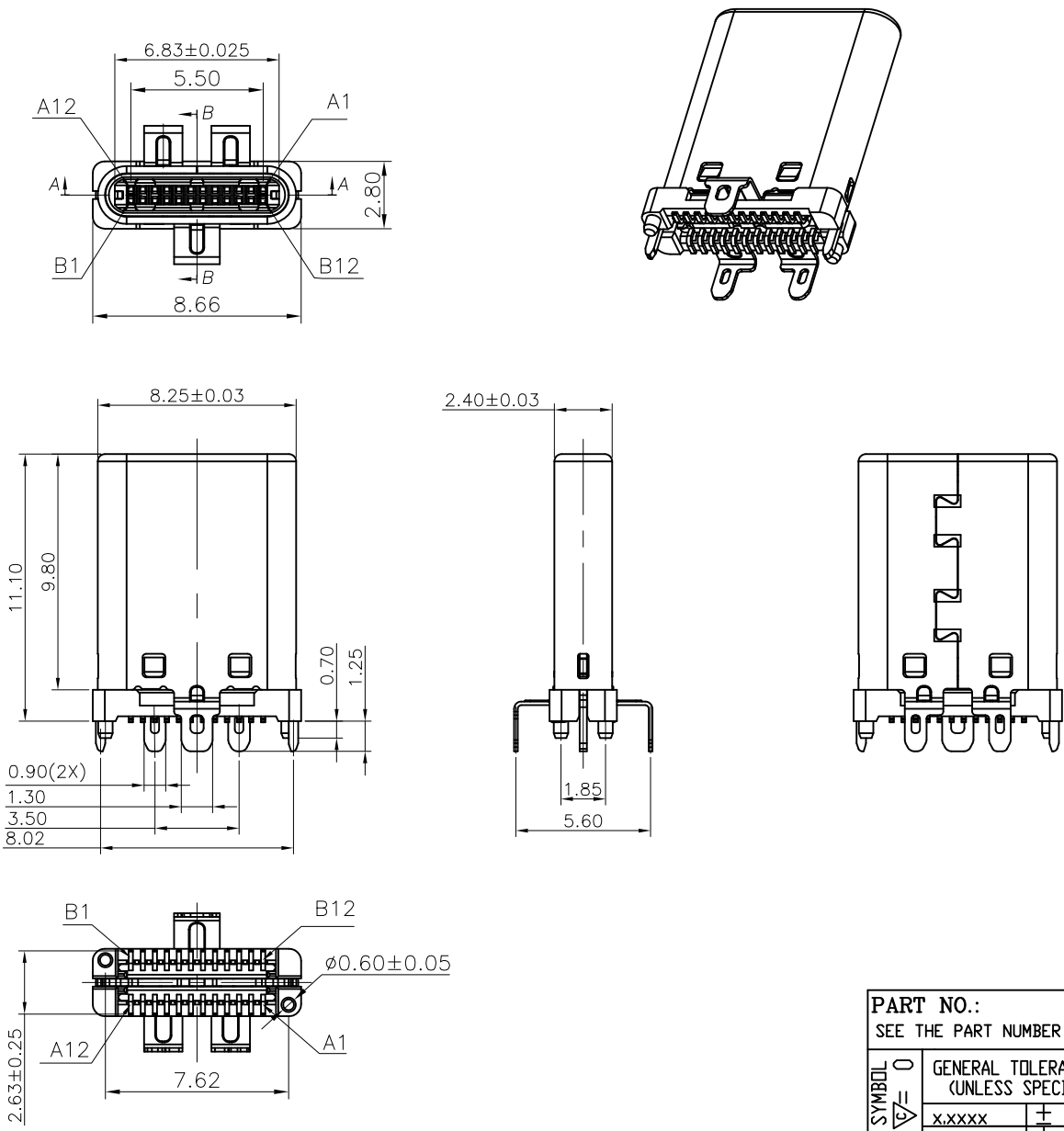


RoHS Compliant 

THIS DRAWING CONTAINS INFORMATION THAT IS PROPRIETARY TO ZDT TECHNOLOGY, AND SHOULD NOT BE USED WITHOUT WRITTEN PERMISSION


REV	ECN No.	DATE	REMARK
A	NEW	2022.07.11	NEW RELEASE



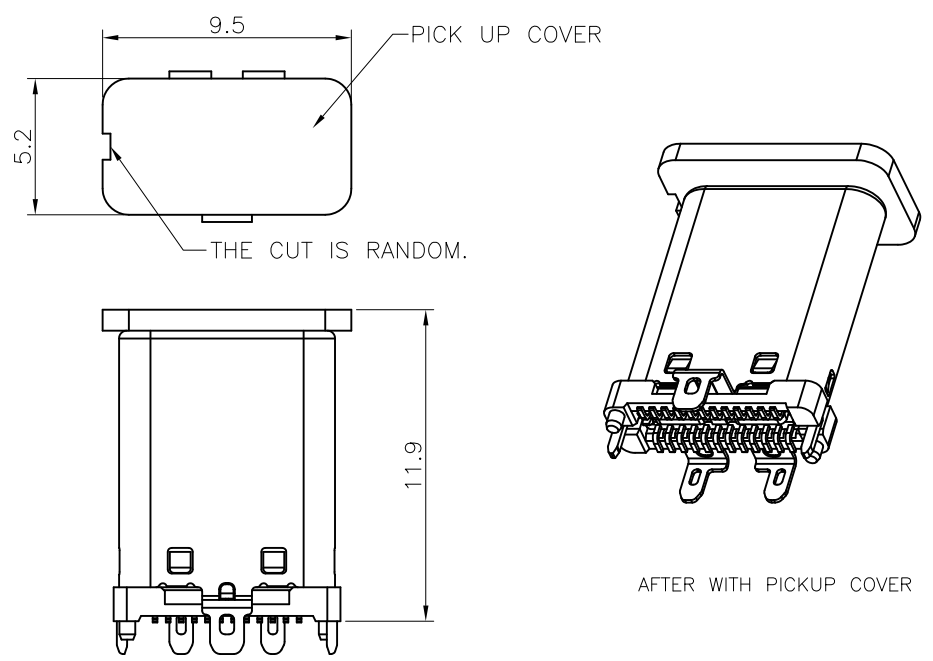
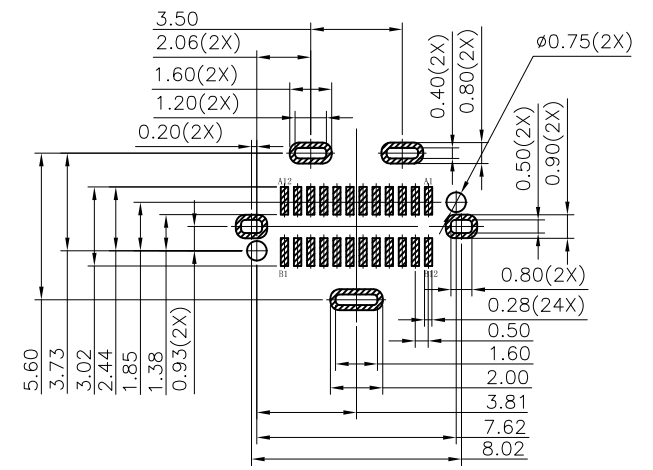
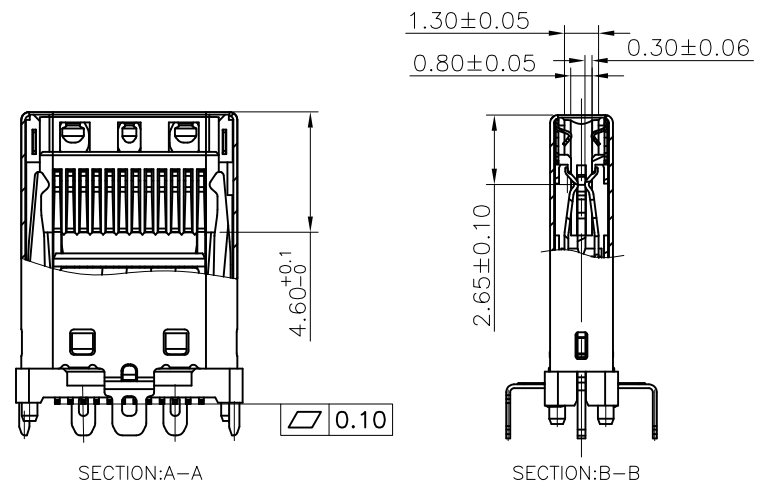
NOTE:
1.MATERIAL SPECIFICATION:
 1.HOUSING&PICKUP COVER:LCP,UL94 V-0.
 2.CONTACTS: COPPER ALLOY(C7025)
 3.SPRING: STAINLESS STEEL(SUS301)
 4.SHELL: STAINLESS STEEL(SUS304)
2.PLATING SPECIFICATION:
 2-1.CONTACTS:
 Ni 50u" MIN. UNDER PLATED OVER ALL.
 Au PLATED ON THE FUNCTIONAL AREA OF CONTACT.
 (GOLD PLATING THICKNESS FOLLOW THE P/N)
 PLATING SPECIFICATIONS OF THE SOLDER AREA FOLLOW THE P/N
 2-2.FRONT SHELL:
 Ni 30u" MIN. UNDER PLATED OVER ALL.
 2-3.SPRING:
 Ni 50u" MIN. UNDER PLATED OVER ALL.
 80u" MIN. TIN PLATED ON SOLDER AREA.
3.MECHANICAL PERFORMANCE,
 3-1.INSERTION FORCE: 0.5~2.0kgf.
 3-2.EXTRACTION FORCE: 0.8kgf~2.0kgf.
 3-3.DURABILITY: 10000 CYCLES.
4.ELECTRICAL PERFORMANCE,
 4-1. CURRENT RATING:3.0A
 VOLTAGE RATING:5.0V
 4-2. LLCR:
 VBUS & GND PINS AND OTHER PINS: 40mΩ/PIN MAX.
 SHIELD: 50mΩ/MAX.
 LLCR MAX. CHANGE OF ALL PINS: 10mΩ.
 4-3.INSULATION RESISTANCE: 100MΩ MIN
 4-4.DIELECTRIC WITHSTAND VOLTAGE,AC 100V FOR 1 MINUTE.
5. ENVIRONMENTAL PERFORMANCE:
 OPERATING TEMPERATURE: -25°C~+85°C.
6.IR REFLOW:
 THE PEAK TEMPERATURE ON THE BOARD SHALL BE MAINTAINED FOR 10 SECONDS AT 260°C.
7. PART NUMBER CODE:
 Z-CM026SL B XX X -A-02
 (1)(2)(3)
 (1) HOUSING COLOR: (2)CONTACTS PLATED:
 B:BLACK 02:接触区镀金3u", 焊接区镀锡80u"MIN
 (3) 包装规格:
 R: 卷装+CAP (普通包装)
 VR: 卷装+CAP+真空包装 (专用客户指定包装)

PART NO.: SEE THE PART NUMBER CODE		ZDT 深圳市中科兴达科技有限公司 SHENZHEN ZDT TECHNOLOGY CO.,LTD		DRAWN BY SAM	DATE 2022.07.11												
<table border="1"> <tr> <th colspan="2">GENERAL TOLERANCES (UNLESS SPECIFIED)</th> </tr> <tr> <td>x.xxxxx</td> <td>± ---</td> </tr> <tr> <td>x.xxx</td> <td>± 0.10</td> </tr> <tr> <td>x.xx</td> <td>± 0.25</td> </tr> <tr> <td>x.x</td> <td>± 0.30</td> </tr> <tr> <td>ANGULAR</td> <td>± ---</td> </tr> </table>		GENERAL TOLERANCES (UNLESS SPECIFIED)		x.xxxxx	± ---	x.xxx	± 0.10	x.xx	± 0.25	x.x	± 0.30	ANGULAR	± ---	TITLE TYPE C公头直立式三支脚, 脚距1.75		CHECKED BY JAY	DATE 2022.07.11
		GENERAL TOLERANCES (UNLESS SPECIFIED)															
x.xxxxx	± ---																
x.xxx	± 0.10																
x.xx	± 0.25																
x.x	± 0.30																
ANGULAR	± ---																
<table border="1"> <tr> <td>QUALITY SYMBOL 0</td> <td>0</td> </tr> <tr> <td>0</td> <td>0</td> </tr> <tr> <td>0</td> <td>0</td> </tr> <tr> <td>0</td> <td>0</td> </tr> <tr> <td>0</td> <td>0</td> </tr> </table>		QUALITY SYMBOL 0	0	0	0	0	0	0	0	0	0	DWG.NO. CM026-02	SHEET NO. 1 OF 2	APPROVED BY JACKY	DATE 2022.07.11		
QUALITY SYMBOL 0	0																
0	0																
0	0																
0	0																
0	0																
<table border="1"> <tr> <td>DIMENSION STYLE MM ONLY</td> <td>DESIGN UNITS METRIC</td> <td>SCALE 1:1</td> <td colspan="3">THIRD ANGLE PROJECTION</td> </tr> </table>		DIMENSION STYLE MM ONLY	DESIGN UNITS METRIC	SCALE 1:1	THIRD ANGLE PROJECTION												
DIMENSION STYLE MM ONLY	DESIGN UNITS METRIC	SCALE 1:1	THIRD ANGLE PROJECTION														

10 9 8 7 6 5 4 3 2 1

RoHS Compliant  THIS DRAWING CONTAINS INFORMATION THAT IS PROPRIETARY TO ZDT TECHNOLOGY, AND SHOULD NOT BE USED WITHOUT WRITTEN PERMISSION

REV	ECN No.	DATE	REMARK
A	NEW	2022.07.11	NEW RELEASE



USB TYPE-C PIN ASSIGNMENTS

PIN NUMBER	SIGNAL NAME	PIN NUMBER	SIGNAL NAME
A1	GND	B12	GND
A2	SSTXp1	B11	SSRXp1
A3	SSTXn1	B10	SSRXn1
A4	Vbus	B9	Vbus
A5	CC1	B8	SBU2
A6	Dp1	B7	Dn2
A7	Dn1	B6	Dp2
A8	SBU1	B5	CC2
A9	Vbus	B4	Vbus
A10	SSRXn2	B3	SSTXn2
A11	SSRXp2	B2	SSTXp2
A12	GND	B1	GND

PART NO.: SEE THE PART NUMBER CODE		ZDT 深圳市中科兴达科技有限公司 SHENZHEN ZDT TECHNOLOGY CO.,LTD		DRAWN BY SAM	DATE 2022.07.11
GENERAL TOLERANCES (UNLESS SPECIFIED)		TITLE TYPE C公头直立式三支脚, 脚距1.75		CHECKED BY JAY	DATE 2022.07.11
QUALITY SYMBOL		DWG.NO.	CM026-02	APPROVED BY JACKY	DATE 2022.07.11
0	x.xxxxx	DIMENSION STYLE	MM ONLY	SCALE	
0	x.xxx	DESIGN UNITS	METRIC	2 OF 2	
0	x.xx			THIRD ANGLE PROJECTION	
0	x.x			frame size: A4	
0	ANGULAR				