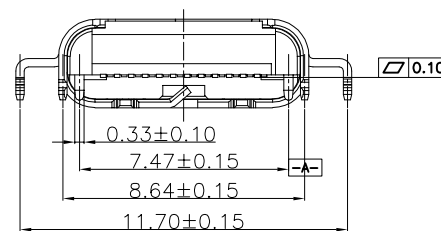
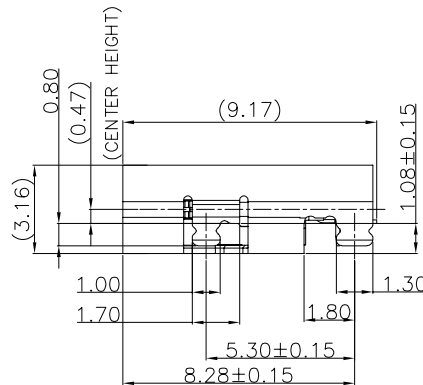
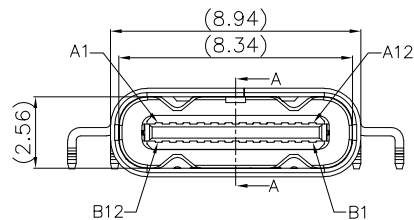
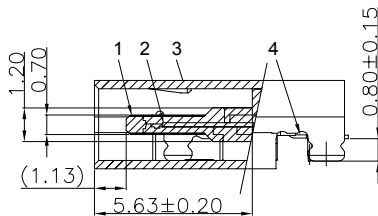
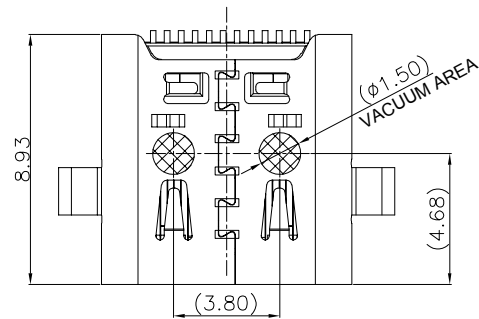


RoHS Compliant

THIS DRAWING CONTAINS INFORMATION THAT IS PROPRIETARY TO ZDT TECHNOLOGY, AND SHOULD NOT BE USED WITHOUT WRITTEN PERMISSION

REV	ECN No.	DATE	REMARK
A	NEW	2020.12.15	NEW RELEASE
B	---	2023.09.18	图框更新



NOTE:

- ELECTRICAL PERFORMANCE:
 - CURRENT RATING: 5 AMPS. FOR TOTAL VBUS/GND PINS; 1.25AMPS FOR CC PIN, 0.25 AMPS. FOR ALL OTHER CONTACT.
 - VOLTAGE RATING: 5 V DC/AC (RMS. MAX)
 - LLCR:
 - VBUS & GND PINS AND OTHER PINS: 40MΩ/PIN MAX.
 - SHIELD: 50MΩ/MAX.
 - LLCR MAX. CHANGE OF ALL PINS: 10MΩ.
 - INSULATION RESISTANCE: 100MΩ MIN
 - DIELECTRIC WITHSTAND VOLTAGE: AC 100V FOR 1 MINUTE.
- MECHANICAL PERFORMANCE:
 - INSERTION FORCE: 5~20N.
 - EXTRACTION FORCE: 8~20N.
 - DURABILITY: 10000 CYCLES.
- ENVIRONMENTAL PERFORMANCE:
 - OPERATING TEMPERATURE: -25°C~+85°C.
 - IR REFLOW:
 - THE PEAK TEMPERATURE ON THE BOARD SHALL BE MAINTAINED FOR 10 SECONDS AT 260°C.
- COMPLIANCE WITH ROHS REQUIREMENTS.
- SALT SPRAY: 48H
- With ▲ for the key control size

8.PART NUMBER CODE:

CF 3 24 - 011 S C B 12 R
(1)(2) (3) (4) (5) (6)

- Product type:
 - 2: TOP-MOUNT
 - 3: MID-MOUNT
- Pin No.:
 - 24: 24Pin
- HOUSING MATERIALS:
 - C: PA9T
- HOUSING COLOR:
 - B: BLACK
- CONTACTS PLATED:
 - 12: 接触镀金 3u"其它GF
- PACKING OPTIONS:
 - R: TAPE & REEL

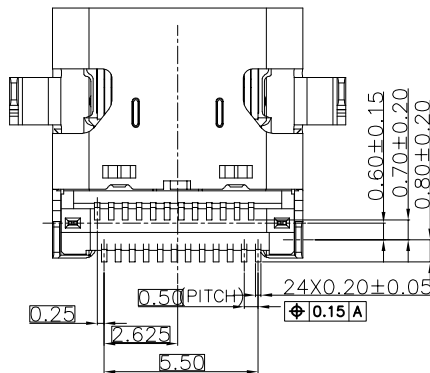


TABLE:

NO	PART	Q'TY	Material
1	SHELL	1	STAINLESS STEEL 304, NI 30u" MIN PLATED T=0.30
2	Mid Plate	1	STAINLESS STEEL 301, NI 30u" MIN PLATED T=0.12
3	CONTACT	24	COPPER STEEL C18400, Au3U" plated on contact area GF plated 50u"min on solder area; Nickel 50u"min underplating over all. T=0.12
4	HOUSING	1	PA9T HF 30%玻纤, UL94 V-0 BLACK

PART NO.:

SEE THE PART NUMBER CODE

深圳市中科兴达科技有限公司
SHENZHEN ZDT TECHNOLOGY CO., LTD

DRAWN BY: SAM

QUALITY SYMBOL	GENERAL TOLERANCES	
	x.xxxx	± ---
	x.xxx	± 0.10
	x.xx	± 0.25
	x.x	± 0.30
ANGULAR	± ---	

TITLE
USB 4.0 Type C 24P 母座无后盖单壳
双贴SMT 沉板1.1mm, L=9.17mm(客户图F5)

CHECKED BY: JAY

APPROVED BY: JACKY

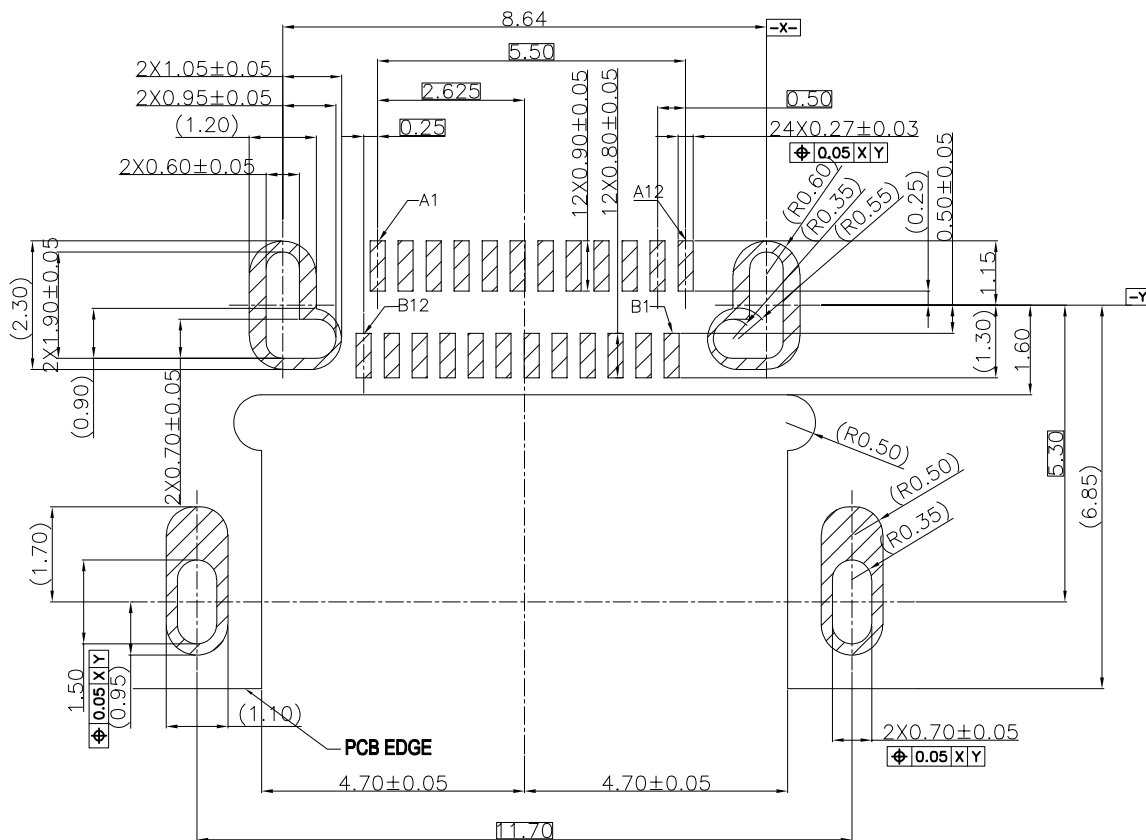
	THIRD ANGLE PROJECTION	UNIT mm	SCALE 1:1	SHEET NO. 1 OF 2
--	------------------------	------------	--------------	---------------------

DWG.NO.
CF324-011

RoHS Compliant

THIS DRAWING CONTAINS INFORMATION THAT IS PROPRIETARY TO ZDT TECHNOLOGY, AND SHOULD NOT BE USED WITHOUT WRITTEN PERMISSION

REV	ECN No.	DATE	REMARK
A	NEW	2020.12.15	NEW RELEASE
B	---	2023.09.18	图框更新



PIN DEFINITION:

PIN No.	A1	A2	A3	A4	A5	A6	A7	A8	A9	A10	A11	A12
	GND	TX1+	TX1-	VBus	CC1	D+	D-	SBU1	VBus	RX2-	RX2+	GND
PIN No.	B12	B11	B10	B9	B8	B7	B6	B5	B4	B3	B2	B1
	GND	RX1+	RX1-	VBus	SBU2	D-	D+	CC2	VBus	TX2-	TX2+	GND

PART NO.: SEE THE PART NUMBER CODE		ZDT 深圳市中科兴达科技有限公司 SHENZHEN ZDT TECHNOLOGY CO., LTD		DRAWN BY: SAM	
QUALITY SYMBOL 0 0 0 0 0	GENERAL TOLERANCES		TITLE		
	x.xxxx	± ---	USB 4.0 Type C 24P母座无后盖单壳		
	x.xxx	± 0.10	双贴SMT 沉板1.1mm,L=9.17mm(F5)		
	x.xx	± 0.25	THIRD ANGLE PROJECTION		
	x.x	± 0.30	UNIT	SCALE	SHEET NO.
ANGULAR	± ---	mm	1:1	2 OF 2	
		DWG.NO. CF324-011			

frame size: A4