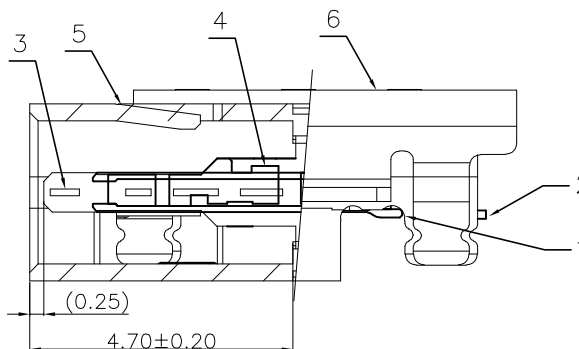
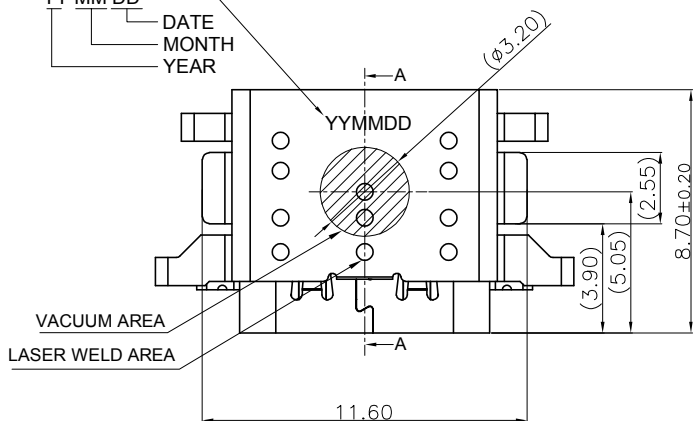


REV	ECN No.	DATE	REMARK
A	NEW	2020.12.15	NEW RELEASE
B	---	2023.09.19	图框更新

Date Code:
YY MM DD
DATE
MONTH
YEAR



SECTION A-A(剖视图A-A)
SCALE 2:1 (比例 2:1)

NOTE:
1.ELECTRICAL PERFORMANCE,
1-1. CURRENT RATING:5 AMPS. FOR TOTAL VBUS/GND PINS;
1.25AMPS FOR CC PIN,0.25 AMPS. FOR ALL OTHER CONTACT.
1-2. VOLTAGE RATING:5 VDC/AC (RMS. MAX)
1-3. LLCR:--
VBUS & GND PINS AND OTHER PINS: 40MΩ/PIN MAX.
SHIELD:50MΩ/MAX.
LLCR MAX. CHANGE OF ALL PINS: 10MΩ.
1-4.INSULATION RESISTANCE: 100MΩ MIN
1-5.DIELECTRIC WITHSTAND VOLTAGE,AC 100V FOR 1 MINUTE.
2.MECHANICAL PERFORMANCE,
2-1.INSERTION FORCE: 5~20N.
2-2.EXTRACTION FORCE: 8~20N.
2-3.DURABILITY: 10000 CYCLES.
3.ENVIRONMENTAL PERFORMANCE:
OPERATING TEMPERATURE: -25°C~+85°C.
4.IR REFLOW:
THE PEAK TEMPERATURE ON THE BOARD SHALL BE MAINTAINED FOR 10 SECONDS AT 260°C.
5.COMPLIANCE WITH ROHS REQUIREMENTS.
6.SALT SPRAY:48H
7.PART NUMBER CODE:
CF 3 24 - 015 S C B 12 R
(1)(2) (3) (4) (5) (6)

- (1) Product type:
2:TOP-MOUNT
3:MID-MOUNT
- (2) Pin No.:
24:24Pin
- (3) HOUSING MATERIALS:
C:PA9T
- (4) HOUSING COLOR:
B:BLACK
- (5) CONTACTS PLATED:
12:接触镀金3u"厚度GF
- (6) PACKING OPTIONS
R:TAPE & REEL

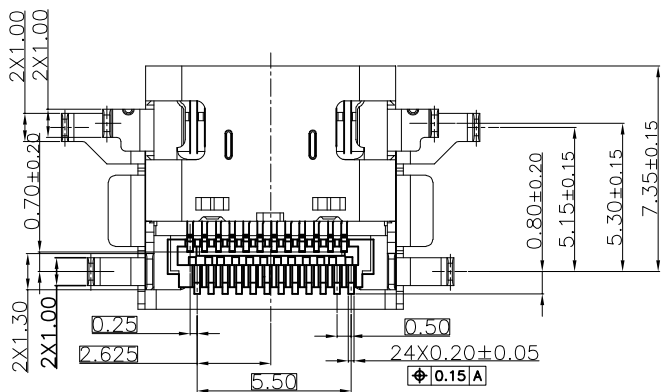
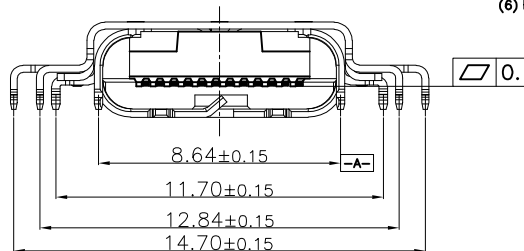
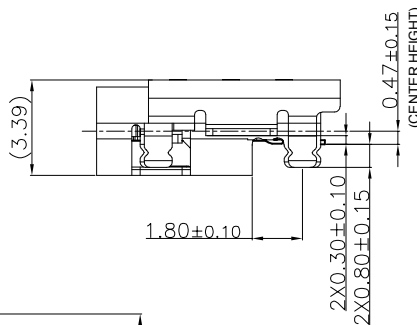
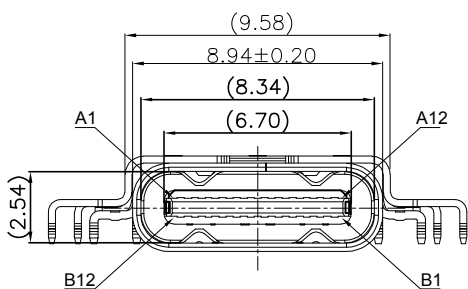


TABLE:

NO	PART	Q'TY	Material
1	SHELL	1	STAINLESS STEEL 304, NI 30u" MIN PLATED
2	Mid Plate	1	STAINLESS STEEL 301, NI 30u" MIN PLATED
3	CONTACT	24	COPPER STEEL C18400,Au(PART NUMBER CODE) plated on contact area Matte Tin plated 50u"min on solder area; Nickel 50u"min underplating over all.
4	IMD HOUSING	1	PA9T HF 30%玻纤, UL94 V-0, 黑色

PART NO.:

SEE THE PART NUMBER CODE

深圳市中科兴达科技有限公司
SHENZHEN ZDT TECHNOLOGY CO., LTD

DRAWN BY: SAM

QUALITY SYMBOL	GENERAL TOLERANCES	
	$\nabla = 0$	\pm ---
	$\nabla = 0$	± 0.10
	$\nabla = 0$	± 0.25
	$\nabla = 0$	± 0.30
$\nabla = 0$	ANGULAR	\pm ---

TITLE
USB 4.0 Type C 24P母座无后盖双壳
沉板双贴SMT cl=0.47mm,L=8.7mm (F5)

CHECKED BY: JAY

APPROVED BY: JACKY

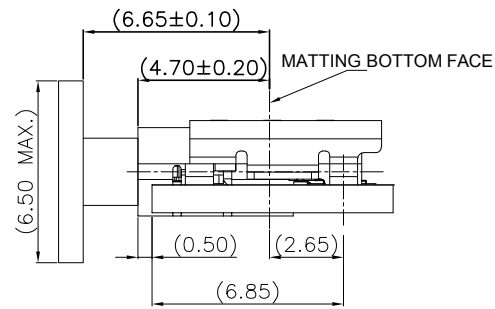
	THIRD ANGLE PROJECTION	UNIT mm	SCALE 1:1	SHEET NO. 1 OF 2
--	------------------------	------------	--------------	---------------------

DWG.NO.
CF324-015

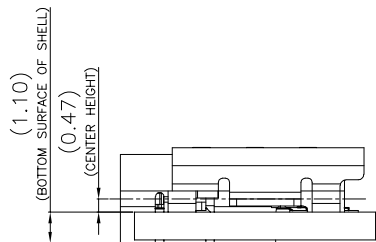
RoHS Compliant

THIS DRAWING CONTAINS INFORMATION THAT IS PROPRIETARY TO ZDT TECHNOLOGY, AND SHOULD NOT BE USED WITHOUT WRITTEN PERMISSION

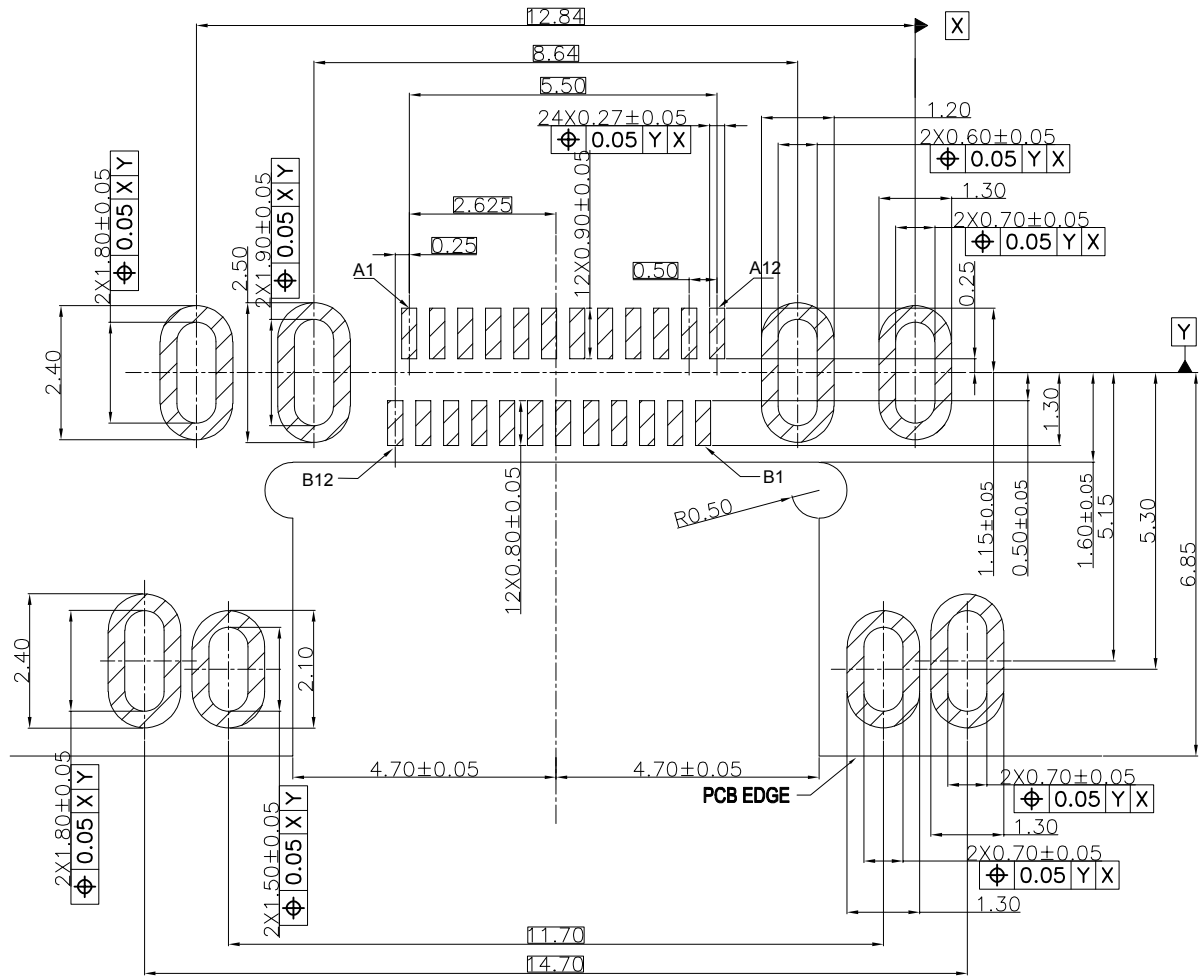
REV	ECN No.	DATE	REMARK
A	NEW	2020.12.15	NEW RELEASE
B	---	2023.09.19	图框更新



MATED CONDITION(REF.)



MOUNTING CONDITION(REF.)



Recommended PCB Layout(Top View)/推荐的PCB布局(前视图)

General Tolerances:±0.05/一般公差:±0.05

PIN DEFINITION:

PIN No.	A1	A2	A3	A4	A5	A6	A7	A8	A9	A10	A11	A12
	GND	TX1+	TX1-	VBus	CC1	D+	D-	SBU1	VBus	RX2-	RX2+	GND
PIN No.	B12	B11	B10	B9	B8	B7	B6	B5	B4	B3	B2	B1
	GND	RX1+	RX1-	VBus	SBU2	D-	D+	CC2	VBus	TX2-	TX2+	GND

PART NO.: SEE THE PART NUMBER CODE		深圳市中科兴达科技有限公司 SHENZHEN ZDT TECHNOLOGY CO., LTD		DRAWN BY: SAM	
QUALITY SYMBOL = 0	GENERAL TOLERANCES		TITLE		
	x.xxxx	± ---	USB 4.0 Type C 24P母座无后盖双壳		
	x.xxx	± 0.10	沉板双贴SMT cl=0.47mm,L=8.7mm(F5)		
	x.xx	± 0.25	THIRD ANGLE PROJECTION		
x.x	± 0.30	UNIT	SCALE	SHEET NO.	DWG.NO.
ANGULAR	± ---	mm	1:1	2 OF 2	CF324-015

frame size: A4