



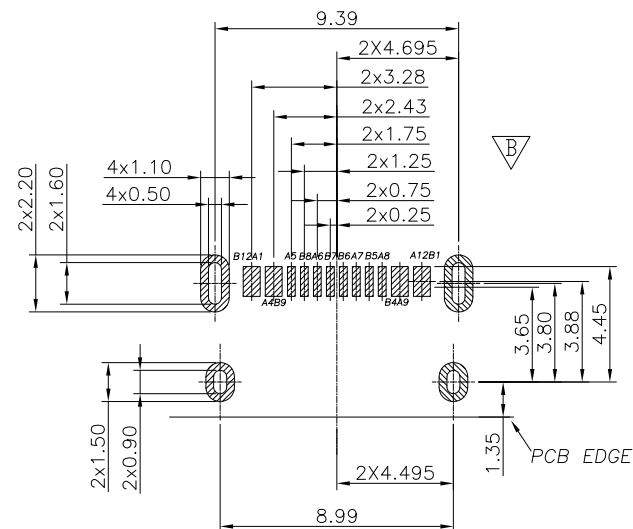
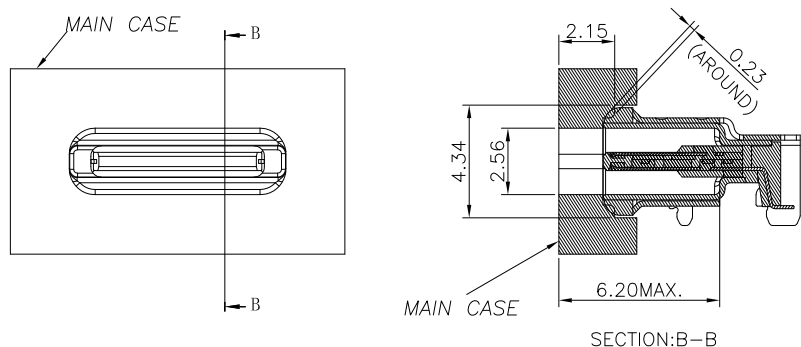
RoHS Compliant

THIS DRAWING CONTAINS INFORMATION THAT IS PROPRIETARY TO ZDT TECHNOLOGY, AND SHOULD NOT BE USED WITHOUT WRITTEN PERMISSION



REV	ECN No.	DATE	REMARK
A	NEW	2022.07.18	NEW RELEASE
B	---	2023.02.13	修正PCB LAYOUT PIN位依实物为主

RECOMMENDED OPENING DIMENSIONS OF CASE MATING AREA WITH SEALING RING



RECOMMENDED PCB LAYOUT(TOP VIEW)  
THICKNESS 1.0±0.10MM;DEFAULT TOLERANCE:±0.05

USB TYPE-C PIN ASSIGNMENTS

PIN NUMBER	SIGNAL NAME	PIN NUMBER	SIGNAL NAME
A1	GND	B12	GND
A4	Vbus	B9	Vbus
A5	CC1	B8	SBU2
A6	Dp1	B7	Dn2
A7	Dn1	B6	Dp2
A8	SBU1	B5	CC2
A9	Vbus	B4	Vbus
A12	GND	B1	GND

PART NO.:  
SEE THE PART NUMBER CODE

**ZDT** 深圳市中科兴达科技有限公司  
SHENZHEN ZDT TECHNOLOGY CO., LTD

DRAWN BY: SAM  
DATE: 2023.02.13

QUALITY SYMBOL	GENERAL TOLERANCES (UNLESS SPECIFIED)	
	x.xxxxx	± ---
	x.xxx	± 0.15
	x.xx	± 0.20
	x.x	± 0.30
ANGULAR	± ---°	

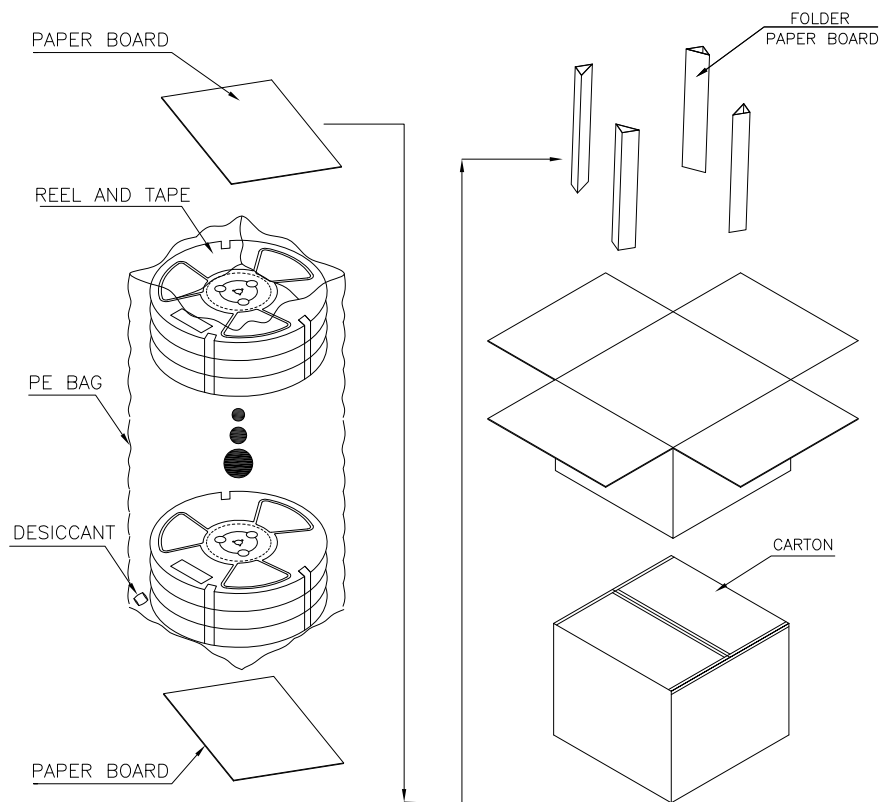
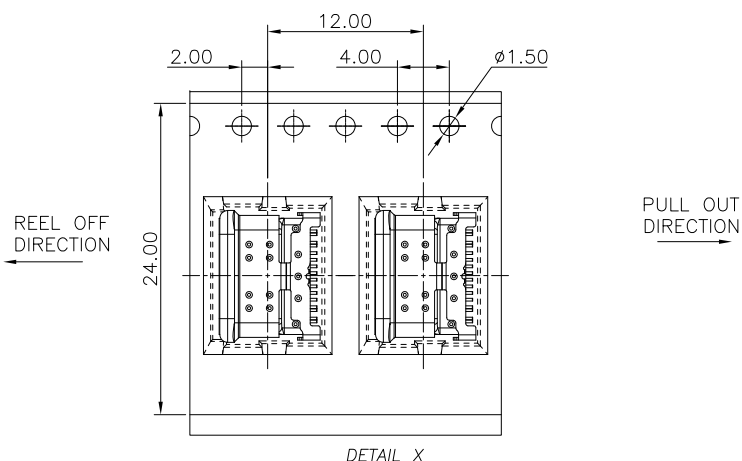
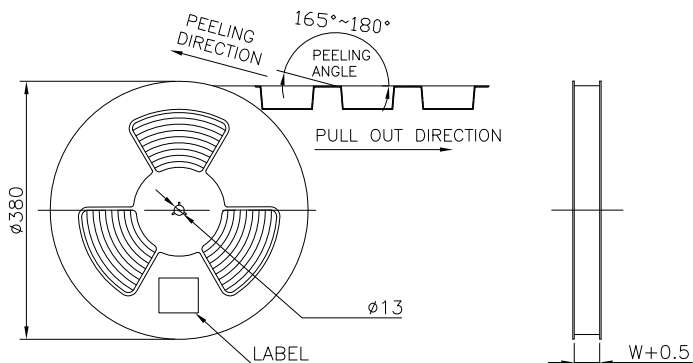
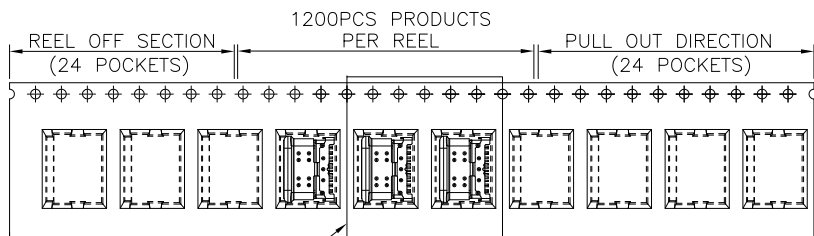
TITLE: USB CF 16P SMT TYPE TOP-MOUNT CH=1.82		CHECKED BY: JAY DATE: 2023.02.13	
DWG.NO.: CFW16-007-01		APPROVED BY: JACKY DATE: 2023.02.13	
SHEET NO.: 2 OF 3		SCALE: 1:1	
DIMENSION STYLE: MM ONLY		DESIGN UNITS: METRIC	

THIRD ANGLE PROJECTION

RoHS Compliant

THIS DRAWING CONTAINS INFORMATION THAT IS PROPRIETARY TO ZDT TECHNOLOGY, AND SHOULD NOT BE USED WITHOUT WRITTEN PERMISSION

REV	ECN No.	DATE	REMARK
A	NEW	2022.07.18	NEW RELEASE
B	---	2023.02.13	修正PCB LAYOUT PIN位依实物为主



	REEL/TRAY	CARTON
CONNECTOR (PCS)	1200	12000

PART NO.:  
SEE THE PART NUMBER CODE

**ZDT** 深圳市中科兴达科技有限公司  
SHENZHEN ZDT TECHNOLOGY CO., LTD

DRAWN BY: SAM  
DATE: 2023.02.13

QUALITY SYMBOL	GENERAL TOLERANCES (UNLESS SPECIFIED)	
	x.xxxx	± ---
	x.xxx	± 0.15
	x.xx	± 0.25
	x.x	± 0.30
ANGULAR	± ---	

TITLE: USB CF 16P SMT TYPE TOP-MOUNT CH=1.82

CHECKED BY: JAY  
DATE: 2023.02.13

DWG.NO.: CFW16-007-01

SHEET NO.: 3 OF 3

APPROVED BY: JACKY  
DATE: 2023.02.13

DIMENSION STYLE: MM ONLY

DESIGN UNITS: METRIC

SCALE: 1:1

THIRD ANGLE PROJECTION