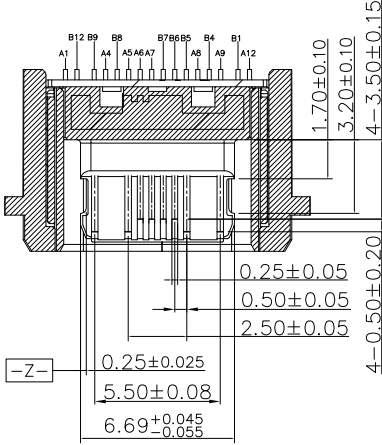
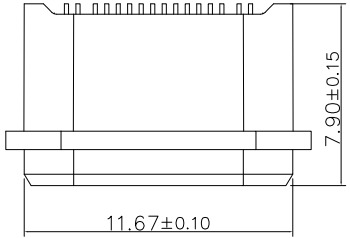
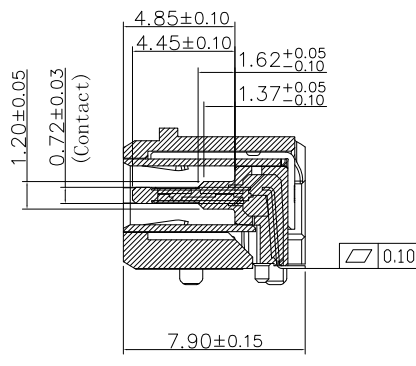
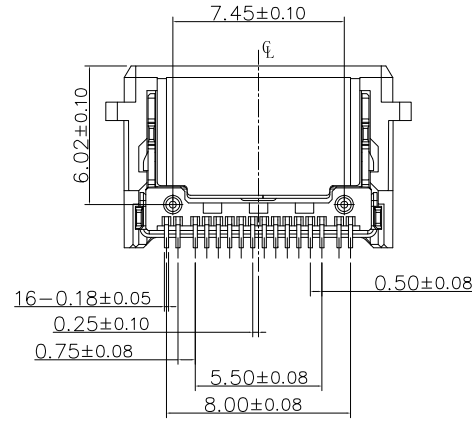
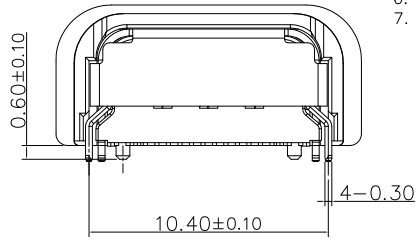
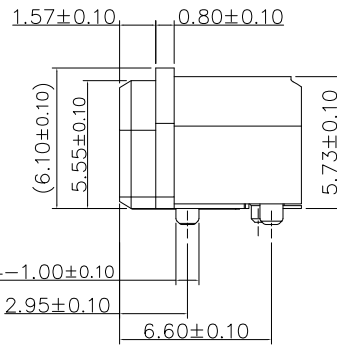
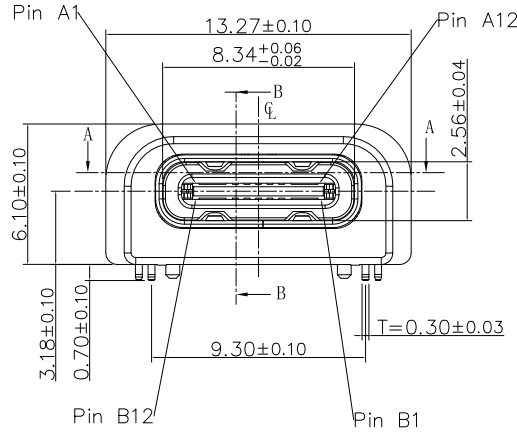


REV	ECN No.	DATE	REMARK
A	NEW	2019.05.08	NEW RELEASE



SECTION A-A



SECTION B-B

NOTE:

- Material:
 - All Housing: LCP(Polyplastics),Black,Thermoplastics,UL94V-0
 - Insulation Jacket: LCP(Polyplastics),Black,Thermoplastics,UL94V-0
 - Contact: Copper Alloy
 - Mid Plate: Stainless Steel
 - Outer Shell: Stainless Steel
 - Inner Shell: Stainless Steel
- FINISH:
 - Contact: Au 3u" Min.
 - Au 1u" Min. on Solder Area
 - 80~200u" Nickel Underplating Over All
 - Mid-Plate: 40~200u" Nickel Over All
 - Inner & Outer Shell: 40~200u" Nickel Over All
- Outer Shell (Insulator) Minimum Thickness 0.40mm
- Electrical Characteristics:
 - Current Rating: 5A For Pin(A4,A9,B4,B9)
 - 1.25A For Pin(A1,A12,B1,B12,B5)
 - 0.25A For Others Pin
 - Insulation Resistance: 100MΩ Min.
 - Contact Resistance: 50 mΩ Max.
 - Dielectric Withstanding Voltage: 500V AC/0.1S/0.1mA
- Mechanical Characteristics:
 - Insertion Force: 5~20N
 - Extraction Force: Initial: 8~20N
 - After durability: 6~20N
 - Durability :10000 Cycles
 - Operating Temperature: -30°C TO +85°C
- 防水等级IP45

7. PART NUMBER CODE:

C F115 - 16 L B XX R - 68
 ① ②

① HOUSING: B:BLACK ② CONTACTS PLATED: 12:接触镀金3u"焊脚区镀金1u"

MATERIAL NO.:

THIS DRAWING CONTAINS INFORMATION THAT IS PROPRIETARY TO ZDT TECHNOLOGY. AND SHOULD NOT BE USED WITHOUT WRITTEN PERMISSION

PART NUMBER CODE
 REVIEW TABLE FOR DETAILS

ZDT 深圳市中科兴达科技有限公司
 SHENZHEN ZDT TECHNOLOGY CO.,LTD

DRAWN BY: SAM DATE: 2019.05.08

QUALITY SYMBOL	0	GENERAL TOLERANCES (UNLESS SPECIFIED)
	x.xxxxx	± ---
	x.xxx	± 0.10
	x.xx	± 0.25
	x.x	± 0.30
ANGULAR	± ---°	

TITLE: USB TYPE C FEMALE
 16PIN SMT TYPE CH3.18防水型

DOCUMENT NO. CF115-16-68 SHEET NO. 1 OF 2

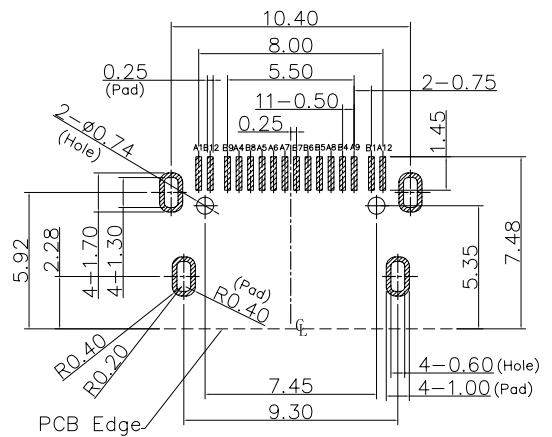
DIMENSION STYLE: MM ONLY DESIGN UNITS: METRIC SCALE: 5:1

CHECKED BY: JAY DATE: 2019.05.08

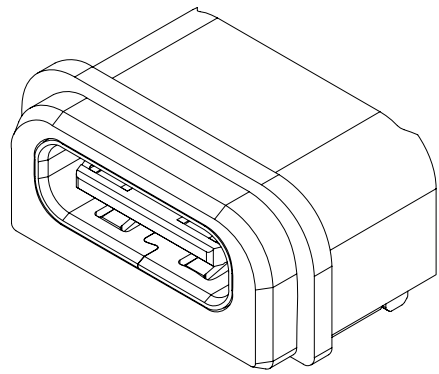
APPROVED BY: JACKY DATE: 2019.05.08

THIRD ANGLE PROJECTION

REV	ECN No.	DATE	REMARK
A	NEW	2019.05.08	NEW RELEASE



Recommended PCB Layout
General Tolerance ±0.05
▨ Pad Area
Top View



PIN ASSIGNMENT

PIN NUMBER	SIGNAL NAME	PIN NUMBER	SIGNAL NAME
A1	GND	B12	GND
A2	TX1+	B11	RX1+
A3	TX1-	B10	RX1-
A4	VBUS	B9	VBUS
A5	CC1	B8	SBU2
A6	D+	B7	D-
A7	D-	B6	D+
A8	SBU1	B5	CC2
A9	VBUS	B4	VBUS
A10	RX2-	B3	TX2-
A11	RX2+	B2	TX2+
A12	GND	B1	GND

9	UP Terminal	Copper alloy	Note.2	ISET
8	Down Terminal	Copper alloy	Note.2	ISET
7	Insulation Jacket	LCP E130i BK UL 94V-0, HF		IPCS
6	Down Molding			IPCS
5	Up Molding			IPCS
4	Second Molding			IPCS
3	Mid-Plate	Stainless Steel	Note.2	IPCS
2	Inner Shell	Stainless Steel	Note.2	IPCS
1	Outer Shell	Stainless Steel	Note.2	IPCS
项次 NO.	品称 NAME	材料 MATERIAL	表面处理 PLATING	备注 MARK

MATERIAL NO.:

PART NUMBER CODE

REVIEW TABLE FOR DETAILS

QUALITY SYMBOL	GENERAL TOLERANCES (UNLESS SPECIFIED)
0	± ---
▽=0	± 0.10
▽=0	± 0.25
▽=0	± 0.30
▽=0	± ---*
ANGULAR	± ---*

TITLE
USB TYPE C FEMALE
16PIN SMT TYPE CH3.18防水型

DOCUMENT NO.
CF115-16-68

SHEET NO.
2 OF 2

DIMENSION STYLE
MM ONLY

DESIGN UNITS
METRIC

SCALE
5:1

THIRD ANGLE PROJECTION

THIS DRAWING CONTAINS INFORMATION THAT IS PROPRIETARY TO ZDT TECHNOLOGY, AND SHOULD NOT BE USED WITHOUT WRITTEN PERMISSION

ZDT 深圳市中兴兴达科技有限公司
SHENZHEN ZDT TECHNOLOGY CO., LTD

DRAWN BY
SAM

DATE
2019.05.08

CHECKED BY
JAY

DATE
2019.05.08

APPROVED BY
JACKY

DATE
2019.05.08