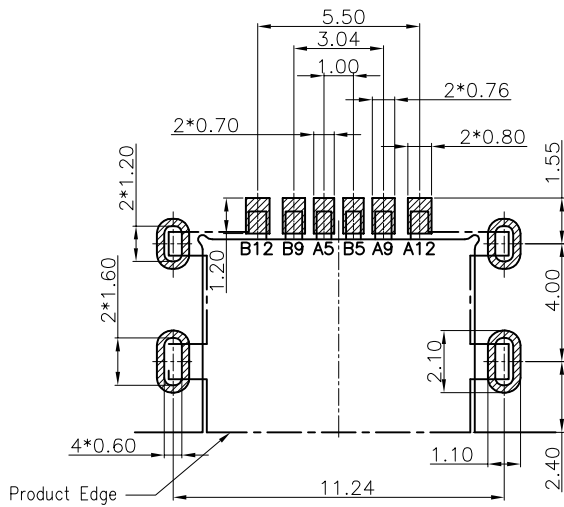
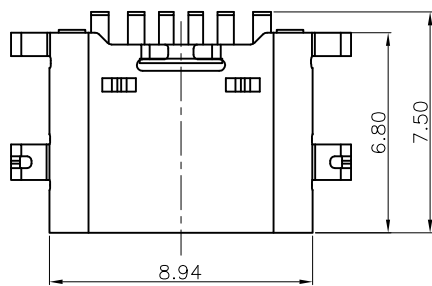


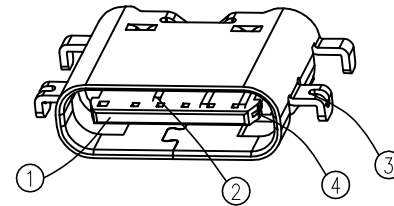
RoHS Compliant

THIS DRAWING CONTAINS INFORMATION THAT IS PROPRIETARY TO ZDT TECHNOLOGY, AND SHOULD NOT BE USED WITHOUT WRITTEN PERMISSION

REV	ECN No.	DATE	REMARK
A	NEW	2020.05.04	NEW RELEASE



RECOMMENDED P.C.B. LAYOUT
TOLERANCE UNSPECIFIED ±0.05mm



NOTES:

SPECIFICATION:

- CURRENT RATING: 3.0A MAX
- VOLTAGE: 100 VAC
- TEMPERATURE RANGE: -30 °C ~ 85 °C
- CONTACT RESISTANCE: 40 MILLIONHM MAX
- INSULATION RESISTANCE: 100 MEGOHMS MIN.
- INSERTION FORCE : 5N~20N
- UNMATING FORCE: 8N~20N
- DURABILITY: 10000 CYCLES

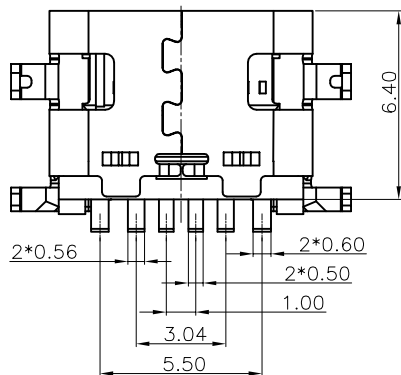
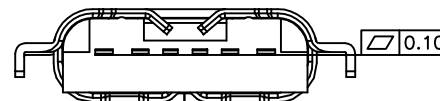
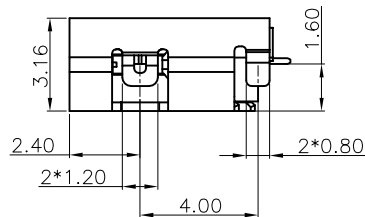
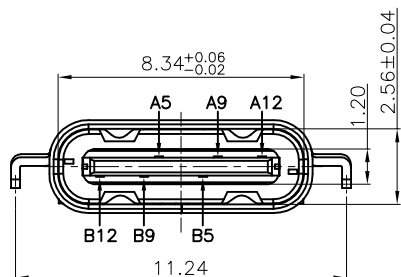
9. PART NUMBER CODE:(产品料号)

CF227-06SL B XX XX-99
(1) (2) (3)

(1) HOUSING COLOR:
B:BLACK

(2) CONTACTS PLATED:
11:接触区镀金1u''焊接区域GF
01:接触区镀金1u''焊接区域镀锡50u''

(3) PACKING OPTIONS
R:TAPE & REEL(常用料)
VR:卷装+真空包装(专用客户指定包规)



USB TYPE-C PIN ASSIGNMENTS

A5	CC1	B12	GND
A9	VBUS	B9	VBUS
A12	GND	B5	CC2
PIN	SIGNAL NAME	PIN	SIGNAL NAME

NO.	DESCRIPTION	MATERIAL	REMARKS	QTY
4	LATCH	STAINLESS STEEL SUS301	----	1SET
3	SHELL	STAINLESS STEEL SUS201	Ni: 50u'' Plated	1SET
2	CONTACT	COPPER ALLOY C2860	接触区镀金, 镍底50U以上, 焊接区见料号	1SET
1	HOUSING	HIGH TEMPERATURE PLASTIC	LCP BLACK UL94V-0	1PCS

PART NO.: SEE THE PART NUMBER CODE		深圳市中科兴达科技有限公司 SHENZHEN ZDT TECHNOLOGY CO., LTD		DRAWN BY SAM	DATE 2020.05.04
QUALITY SYMBOL = 0 ∇ = 0		TITLE TYPE C F 6P沉板1.6四脚插板 CONN		CHECKED BY JAY	DATE 2020.05.04
GENERAL TOLERANCES (UNLESS SPECIFIED)		DWG.NO. CF227-06-99		APPROVED BY JACKY	
x.xxxxx ± ---		SHEET NO. 1 OF 1		DATE 2020.05.04	
x.xxx ± 0.10		SCALE 1:1		THIRD ANGLE PROJECTION	
x.xx ± 0.20		DIMENSION STYLE MM ONLY		SCALE 1:1	
x.x ± 0.30		DESIGN UNITS METRIC		frame size: A4	
ANGULAR ± ---					