

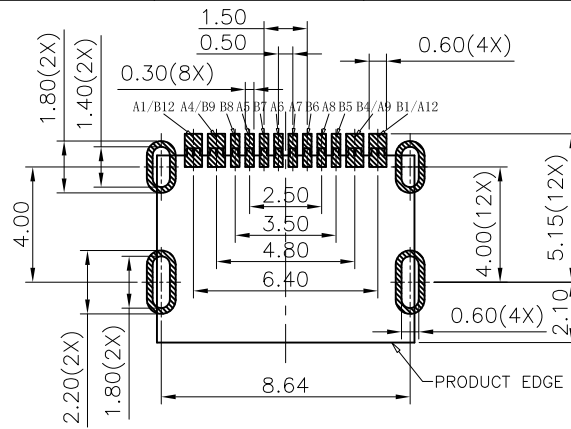
RoHS Compliant

THIS DRAWING CONTAINS INFORMATION THAT IS PROPRIETARY TO ZDT TECHNOLOGY, AND SHOULD NOT BE USED WITHOUT WRITTEN PERMISSION

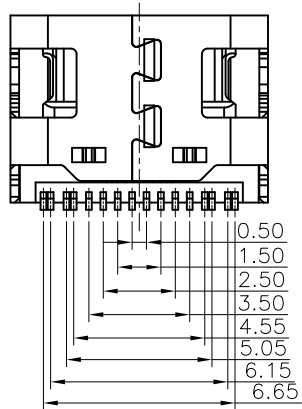
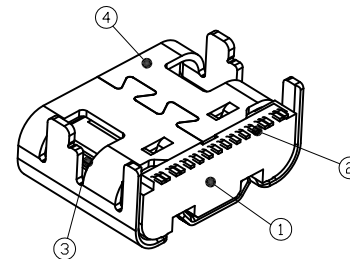
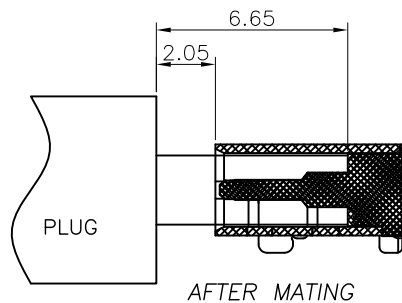
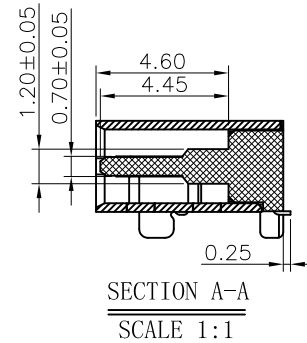
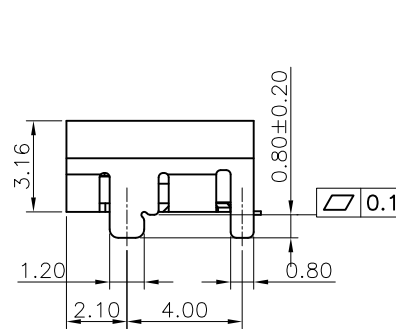
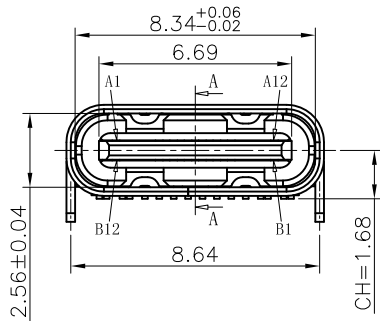
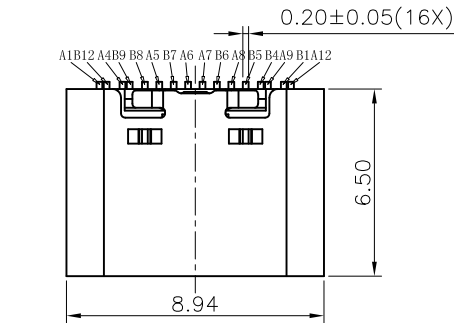
| REV | ECN No. | DATE | REMARK |
|-----|------------|------------|--------------|
| A | NEW | 2015.05.10 | NEW RELEASE |
| B | ECN2003002 | 2020.03.12 | 修改图纸与实物相符 |
| C | -- | 2022.04.06 | 增加10u'' 电镀规格 |

NOTE:

- MATERIAL SPECIFICATION:
 - HOUSING:HIGH TEMPERATURE RESISTANT PLASTIC ,UL94 V-0.
 - CONTACTS:COPPER ALLOY
 - MID PLATE: STAINLESS STEEL SUS301
 - FRONT SHELL: STAINLESS STEEL SUS304
- PLATING SPECIFICATION:
 - CONTACTS:
 - Ni 50u" MIN. UNDER PLATED OVER ALL.
 - Au PLATED ON THE FUNCTIONAL AREA OF CONTACT.
 - (GOLD PLATING THICKNESS FOLLOW THE P/N)
 - FRONT SHELL:
 - Ni 30u" MIN. UNDER PLATED OVER ALL.
 - MID PLATE:
 - CLEAR ONLY
- MECHANICAL PERFORMANCE,
 - INSERTION FORCE: 0.5~2.0kgf.
 - REMOVAL FORCE: 0.8kgf~2.0kgf.
 - DURABILITY: 10000 CYCLES.
- ELECTRICAL PERFORMANCE,
 - CURRENT RATING:5.0A
VOLTAGE RATING:5.0V
 - LLCR:
 - VBUS & GND PINS AND OTHER PINS: 40mΩ/PIN MAX.
 - SHIELD: 50mΩ/MAX.
 - LLCR MAX. CHANGE OF ALL PINS: 10mΩ.
 - INSULATION RESISTANCE: 100MΩ MIN
 - DIELECTRIC WITHSTAND VOLTAGE,AC 100V FOR 1 MINUTE.
- ENVIRONMENTAL PERFORMANCE:
 - OPERATING TEMPERATURE: -25°C~+85°C.
- IR REFLOW:
 - THE PEAK TEMPERATURE ON THE BOARD SHALL BE MAINTAINED FOR 10 SECONDS AT 260°C.
- 符合ROHS要求
- PART NUMBER CODE:
 - Z-CF055S X X XX R-A-02
 - (1) (2) (3)
- HOUSING MATERIAL:
 - L:LCP
 - C:PA9T
 - Q:PA10T
- HOUSING COLOR:
 - B:BLACK
 - O:Orange
 - L:Bule
- CONTACTS PLATED:
 - 12:接触镀金3u''焊接区域镀金1u''
 - 18:接触镀金10u''焊接区域镀金1u''
 - 15:接触镀金30u''焊接区域镀金6F



RECOMMENDED PCB LAYOUT(TOP VIEW)
THICKNESS 0.60MM;DEFAULT TOLERANCE:±0.05



USB TYPE C PIN ASSIGNMENTS

| PIN NUMBER | SIGNAL NAME | PIN NUMBER | SIGNAL NAME |
|------------|-------------|------------|-------------|
| A1 | GND | B12 | GND |
| A4 | VBUS | B9 | VBUS |
| A5 | CC1 | B8 | SUB2 |
| A6 | Dp1 | B7 | Dn2 |
| A7 | Dn1 | B6 | Dp2 |
| A8 | SBU1 | B5 | CC2 |
| A9 | VBUS | B4 | VBUS |
| A12 | GND | B1 | GND |

PART NO.:
SEE THE PART NUMBER CODE

ZDT 深圳市中科兴达科技有限公司
SHENZHEN ZDT TECHNOLOGY CO.,LTD

DRAWN BY: SAM DATE: 2022.04.06

| QUALITY SYMBOL | GENERAL TOLERANCES (UNLESS SPECIFIED) | |
|----------------|---------------------------------------|--------|
| | x.xxxxx | ± --- |
| | x.xxx | ± 0.10 |
| | x.xx | ± 0.25 |
| | x.x | ± 0.30 |
| ANGULAR | ± --- | |

| TITLE | | DWG.NO. | | SHEET NO. | |
|---------------------------------------|--|--------------|--|-----------|--|
| USB C F TYPE单排SMT6.5 四脚插板CONN一体式成型 | | CF055-16-02 | | 1 OF 1 | |
| DIMENSION STYLE | | DESIGN UNITS | | SCALE | |
| MM ONLY | | METRIC | | 1:1 | |

| CHECKED BY | | DATE | |
|-------------|--|------------|--|
| JAY | | 2022.04.06 | |
| APPROVED BY | | DATE | |
| JACKY | | 2022.04.06 | |

THIRD ANGLE PROJECTION