

RoHS Compliant

THIS DRAWING CONTAINS INFORMATION THAT IS PROPRIETARY TO ZDT TECHNOLOGY, AND SHOULD NOT BE USED WITHOUT WRITTEN PERMISSION

REV	ECN No.	DATE	REMARK
A	NEW	2019.07.09	NEW RELEASE

NOTE:

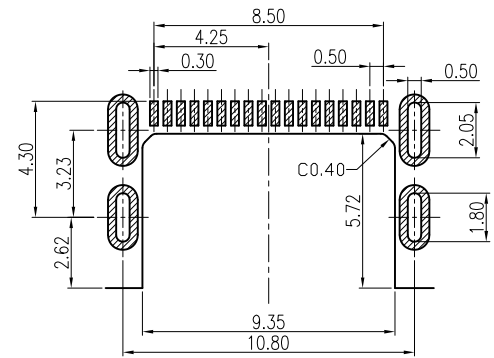
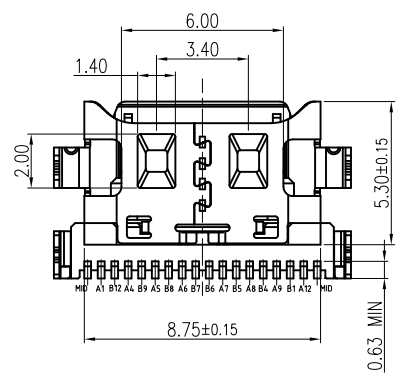
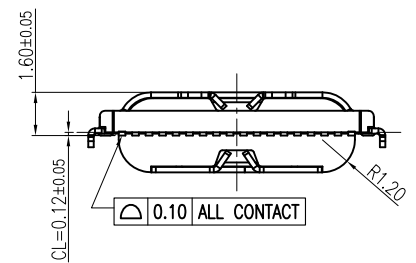
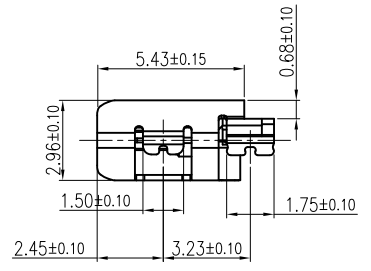
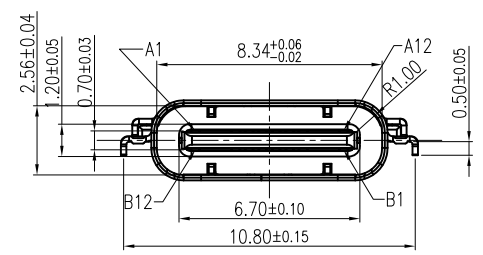
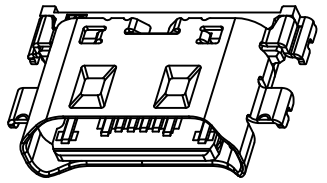
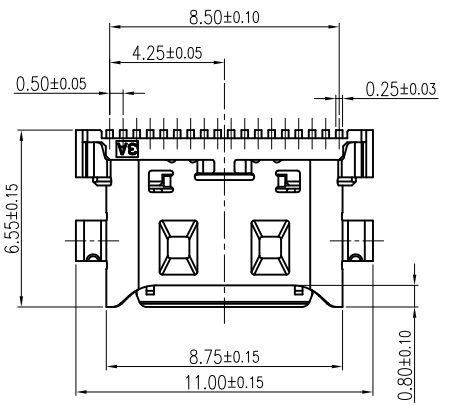
- Electrical Characteristics:
 - 1-1: Current Rating: 3A
 - 1-2: VOLTAGE RATING:5.0V
 - 1-3: Insulation Resistance: 100MΩ Min.
 - 1-4: Contact Resistance:
 - VBUS & GND PINS AND OTHER PINS: 40mΩ/PIN MAX.
 - SHIELD:50mΩ/MAX.
 - SHIELD:LLCR MAX. CHANGE OF ALL PINS: 10mΩ.
 - 1-5: Dielectric Withstanding Voltage: 100V/AC 1Minute
- Mechanical Characteristics:
 - Insertion Force: 5~20N
 - Extraction Force: Initial: 8~20N
 - After durability: 6~20N
 - Durability :10000 Cycles
- Operating Temperature: -25°C TO +85°C

4.PART NUMBER CODE:(产品料号)
CF316-001 S L B 11 R - 64
(1) (2) (3) (4)

- (1) HOUSING MATERIAL:
L:LCP
- (2) HOUSING COLOR:
B:BLACK
- (3) CONTACTS PLATED:
11:接触镀金1u"其它GF
- (4) PACKING OPTIONS
R:TAPE & REEL

Pin	Name	Pin	Name
A1	GND	B12	GND
/	SSTXp1	/	SSRXp1
/	SSTXn1	/	SSRXn1
A4	VBUS	B9	VBUS
A5	CC1	B8	SBU2
A6	Dp1	B7	Dn2
A7	Dn1	B6	Dp2
A8	SBU1	B5	CC2
A9	VBUS	B4	VBUS
/	SSRXn2	/	SSTXn2
/	SSRXp2	/	SSTXp2
A12	GND	B1	GND

7	SHELL	STAINLESS STEEL	Ti/Ni Plated	1PCS
6	OVER MOLDING	HIGH TEMPERATURE PLASTIC	BLACK	1PCS
5	TOP I/M	HIGH TEMPERATURE PLASTIC	BLACK	1PCS
4	BOTTOM I/M	HIGH TEMPERATURE PLASTIC	BLACK	1PCS
3	MID PLATE	STAINLESS STEEL	Ti/Ni Plated	1PCS
2	CONTACT	COPPER ALLOY	Au/Ni Plated	1SET
1	CONTACT	COPPER ALLOY	Au/Ni Plated	1SET
NO.	DESCRIPTION	MATERIAL	REMARKS	QTY



RECOMMENDED P.C.B. LAYOUT
TOLERANCE UNSPECIFIED ±0.05mm

PART NO.:
SEE THE PART NUMBER CODE

ZDT 深圳市中科兴达科技有限公司
SHENZHEN ZDT TECHNOLOGY CO., LTD

DRAWN BY: SAM
DATE: 2019.07.09

QUALITY SYMBOL	0	GENERAL TOLERANCES (UNLESS SPECIFIED)
	x.xxxxx	± ---
	x.xxx	± 0.10
	x.xx	± 0.20
	x.x	± 0.30
ANGULAR	± ---	

TITLE: USB C TYPE 16PIN REC.CL=0.12mm

CHECKED BY: JAY
DATE: 2019.07.09

DWG.NO.: CF316-001-64

SHEET NO.: 1 OF 1

APPROVED BY: JACKY
DATE: 2019.07.09

DIMENSION STYLE: MM ONLY

DESIGN UNITS: METRIC

SCALE: 1:1

THIRD ANGLE PROJECTION

frame size: A4