

RoHS Compliant

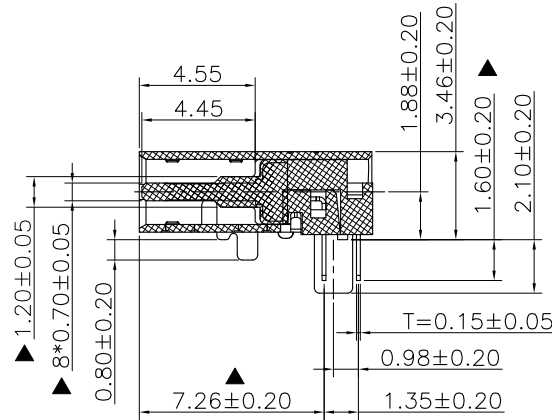
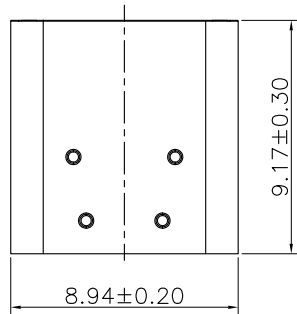
THIS DRAWING CONTAINS INFORMATION THAT IS PROPRIETARY TO ZDT TECHNOLOGY, AND SHOULD NOT BE USED WITHOUT WRITTEN PERMISSION

TID NO. 9891

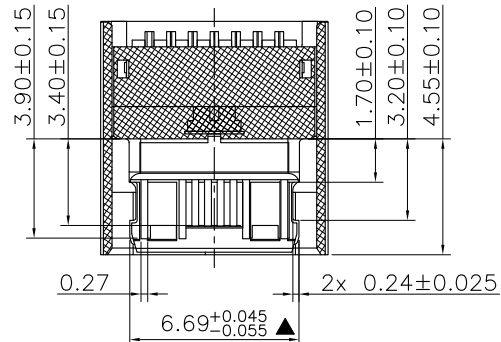
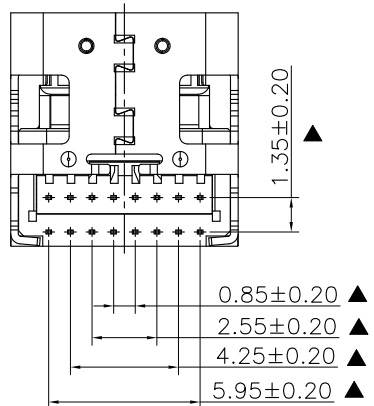
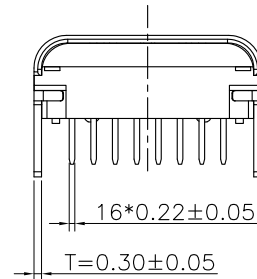
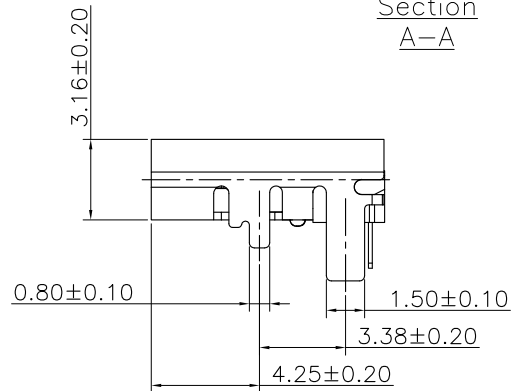
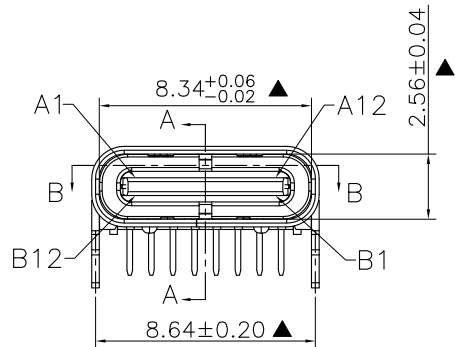
REV	ECN No.	DATE	REMARK
A	NEW	2022.10.25	NEW RELEASE
B	---	2023.08.14	变更新图框
C	---	2023.09.25	整理图纸

Specifications:

- 1.0 Electrical performance:
- 1.1 Contact resistance: 40mΩ max for initial. 10mΩ change after test. measure at 20mv, 100mA.
- 1.2 Dielectric withstanding voltage: AC 100V(rms).
- 1.3 Insulation resistance: 100MΩ min.
- 1.4 Contact current rating: 3A
- 1.5 Voltage: 20 Vac (rms).
- 2.0 mechanical performance:
- 2.1 Mating force: 5~20N
- 2.2 Unmating force: 8~20N Initial test, 6~20N After test
- 2.3 Durability: 10,000 cycles.
- 3.0 Environmental performance:
- 3.1 Temperature range:
- 3.2 Operating temperature: -40°to+85°.
- 3.3 Storage temperature: -20°to+60°.
- 4. With "▲" for the key control size
- 5. PART NUMBER CODE:
CF 2 16 - 016 S L B 01 R - X - 02
(1) (2) (3) (4) (5) (6) (7)
- (1) Product type:
2: TOP-MOUNT
- (2) Pin No.:
16: 16Pin
- (3) HOUSING MATERIALS:
L: LCP
- (4) HOUSING COLOR:
B: BLACK
- (5) CONTACTS PLATED:
01: Au1u" plated on contact area
Matte Tin plated 50u"min on solder area; Nickel 50u"min underplating over all.
11: Au1u" plated on contact area
GF on solder area; Nickel 50u"min underplating over all.
- (6) PACKING OPTIONS
R: TAPE & REEL
- (7) WITH/WITHOUT EMI
无: 带EMI
1: 不带EMI(主打--Featured)



Section A-A



Section B-B

TABLE:

NO	PART	Q'TY	Material
1	SHELL	1	STAINLESS STEEL 304, 50U"MIN NICKEL PLATING
2	EMI Plate	1	STAINLESS STEEL 301, NI 30u" MIN PLATED(SEE THE PART NUMBER CODE:)
3	Mid Plate	1	STAINLESS STEEL 301, NO PLATED
4	CONTACT	16	COPPER STEEL C18400, Au(PART NUMBER CODE) plated on contact area Matte Tin plated 50u"min(Or GF) on solder area; Nickel 50u"min underplating over all.
5	HOUSING	1	LCP BLACK UL94 V-0

PART NO.:

SEE THE PART NUMBER CODE

深圳市中兴科达科技有限公司
SHENZHEN ZDT TECHNOLOGY CO., LTD

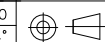
DRAWN BY: SAM

QUALITY SYMBOL	GENERAL TOLERANCES		TITLE
	x.xxxx	± ---	
	x.xxx	± 0.10	
	x.xx	± 0.25	
	x.x	± 0.30	
ANGULAR	± --°		

USB Type-C Receptacle 16PIN DIP CH1.88

CHECKED BY: JAY

APPROVED BY: JACKY



THIRD ANGLE PROJECTION

UNIT mm

SCALE 1:1

SHEET NO. 1 OF 2

DWG.NO. CF216-016-02

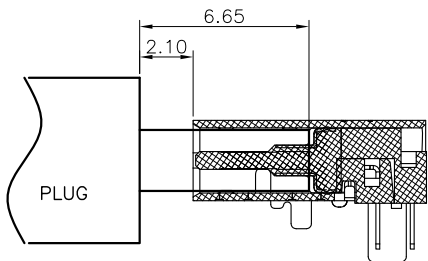
frame size: A4

RoHS Compliant 

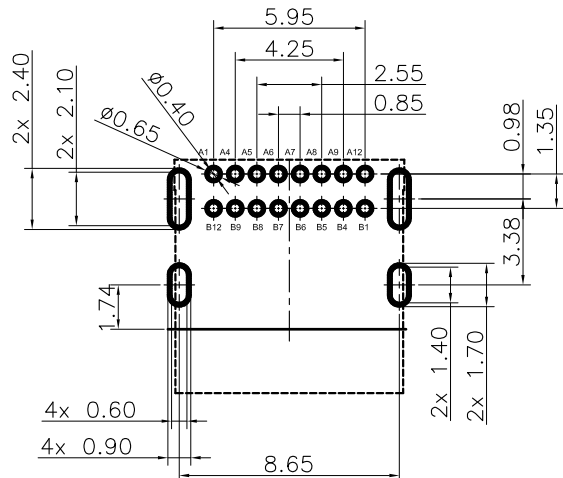
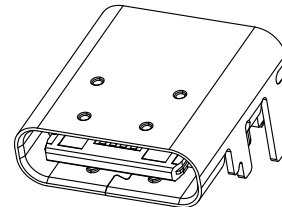
THIS DRAWING CONTAINS INFORMATION THAT IS PROPRIETARY TO ZDT TECHNOLOGY, AND SHOULD NOT BE USED WITHOUT WRITTEN PERMISSION

TID NO. 9891

REV	ECN No.	DATE	REMARK
A	NEW	2022.10.25	NEW RELEASE
B	---	2023.08.14	变更新图框
C	---	2023.09.25	整理图纸




AFTER MATING



RECOMMENDED PCB LAYOUT(TOP)
TOLERANCES: ±0.05MM

USB TYPE-C PIN ASSIGNMENTS

Pin	Signal	Mating Sequence	Pin	Signal	Mating Sequence
A1	GND	First	B12	GND	First
A4	Vbus	First	B9	Vbus	First
A5	CC1	Second	B8	SBU2	Second
A6	Dp1	Second	B7	Dn2	Second
A7	Dn1	Second	B6	Dp2	Second
A8	SBU1	Second	B5	CC2	Second
A9	Vbus	First	B4	Vbus	First
A12	GND	First	B1	GND	First
SHELL		GND	SHELL		GND

PART NO.: SEE THE PART NUMBER CODE		 深圳市中科兴达科技有限公司 SHENZHEN ZDT TECHNOLOGY CO., LTD		DRAWN BY: SAM	
QUALITY SYMBOL 0 = 0	GENERAL TOLERANCES		TITLE USB Type-C Receptacle 16PIN DIP CH.1.88		CHECKED BY: JAY
	x.xxxx	± ---			APPROVED BY: JACKY
	x.xxx	± 0.10			DWG.NO. CF216-016-02
	x.xx	± 0.25			
	x.x	± 0.30			
ANGULAR	± ---°	THIRD ANGLE PROJECTION	UNIT mm	SCALE 1:1	SHEET NO. 2 OF 2