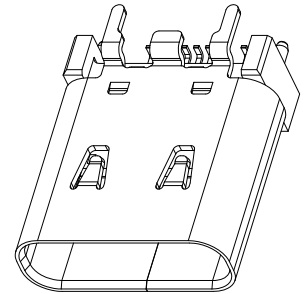
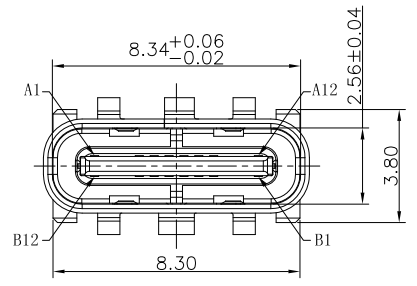


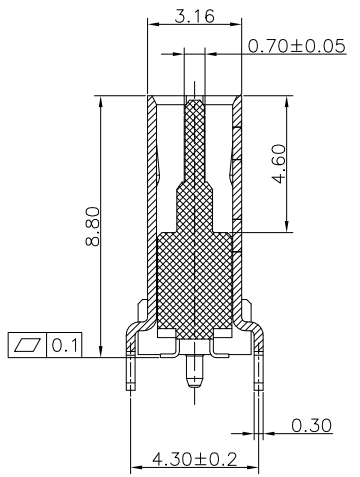
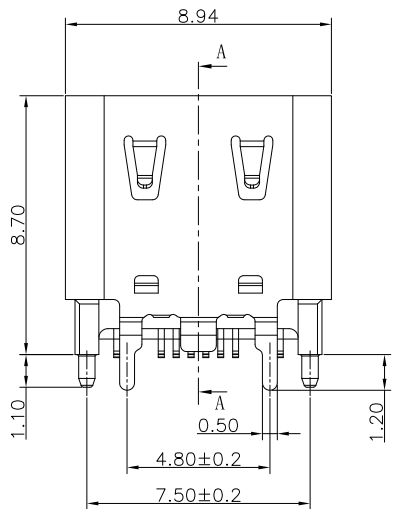
RoHS Compliant

THIS DRAWING CONTAINS INFORMATION THAT IS PROPRIETARY TO ZDT TECHNOLOGY, AND SHOULD NOT BE USED WITHOUT WRITTEN PERMISSION

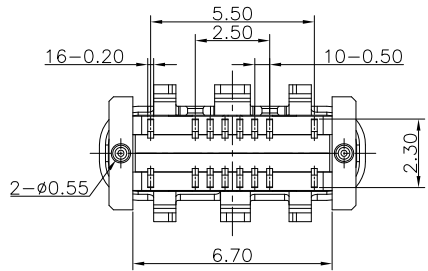
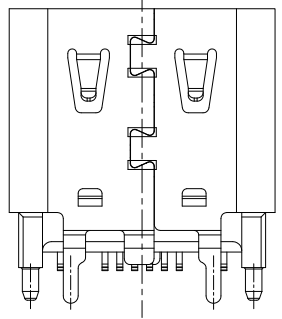
REV	ECN No.	DATE	REMARK
A	NEW	2022.02.14	NEW RELEASE
B	---	2023.06.13	新增LCP本色规格



NOTE:
 1.MATERIAL SPECIFICATION:
 1-1.HOUSING:HIGH TEMPERATURE RESISTANT PLASTIC,UL94 V-0.
 1-2.TERMINAL: COPPER ALLOY
 1-3.MID PLATE: STAINLESS STEEL(SUS301 T=0.15mm)
 1-4.FRONT SHELL: STAINLESS STEEL(SUS304 T=0.3mm)
 2.PLATING SPECIFICATION:
 2-1.TERMINAL:
 Ni 50u" MIN. UNDER PLATED OVER ALL.
 Au PLATED ON THE FUNCTIONAL AREA OF CONTACT.
 (GOLD PLATING THICKNESS FOLLOW THE P/N)
 PLATING SPECIFICATIONS OF THE SOLDER AREA FOLLOW THE P/N
 2-2.FRONT SHELL:
 Ni 30u" MIN. UNDER PLATED OVER ALL.
 2-3.MID PLATE
 CLEAR ONLY
 3.MECHANICAL PERFORMANCE,
 3-1.INSERTION FORCE: 0.5~2.0kgf.
 3-2.REMOVAL FORCE: 0.8kgf~2.0kgf.
 3-3.DURABILITY: 10000 CYCLES.
 4.ELECTRICAL PERFORMANCE,
 4-1. VOLTAGE RATING:5 V DC/AC (RMS. max)
 CURRENT RATING:5 AMPS. FOR TOTAL VBUS/GND PINS;
 1.25AMPS FOR CC PIN,0.25 AMPS. FOR ALL OTHER CONTACT.
 4-2. LLCR:.
 VBUS & GND PINS AND OTHER PINS: 40mΩ/PIN MAX.
 SHIELD: 50mΩ/MAX.
 LLCR MAX. CHANGE OF ALL PINS: 10mΩ.
 4-3.INSULATION RESISTANCE: 100MΩ MIN
 4-4.DIELECTRIC WITHSTAND VOLTAGE,AC 100V FOR 1 MINUTE.
 5. ENVIRONMENTAL PERFORMANCE:
 OPERATING TEMPERATURE: -25°C~+85°C.
 6.IR REFLOW:
 THE PEAK TEMPERATURE ON THE BOARD SHALL
 BE MAINTAINED FOR 10 SECONDS AT 260°C.



SECTION A-A
SCALE 1:1



7.PART NUMBER CODE:

2	CF116-010SLN02R-02	LCP本色半金锡3u"	TAPE & REEL+CAP
1	CF116-010SLB02R-02	LCP黑色半金锡3u"	TAPE & REEL+CAP
NO.	PART NO.	REMARKS	PACKING

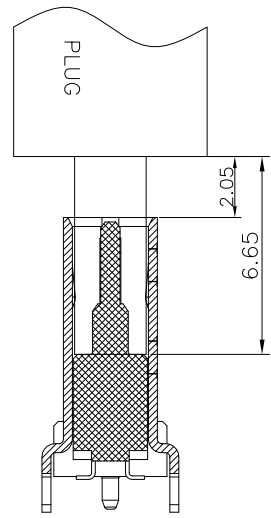
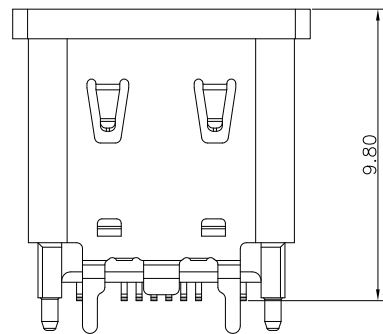
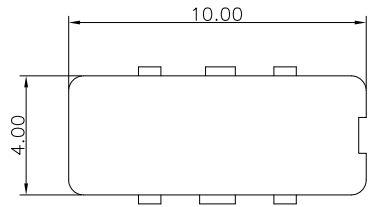
PART NO.: SEE THE PART NUMBER CODE		深圳市中科兴达科技有限公司 SHENZHEN ZDT TECHNOLOGY CO.,LTD		DRAWN BY SAM	DATE 2023.06.13	
GENERAL TOLERANCES (UNLESS SPECIFIED)		TITLE TYPE C母座16P直立式SMT H=8.8		CHECKED BY JAY	DATE 2023.06.13	
QUALITY SYMBOL	0	x.xxxxx	+	---	APPROVED BY JACKY	DATE 2023.06.13
	0	x.xxx	+	0.10		
	0	x.xx	+	0.20		
	0	x.x	+	0.30		
	0	ANGULAR	+	---		
DWG.NO. CF116-010-02		SHEET NO. 1 OF 2		SCALE 1:1		
DIMENSION STYLE MM ONLY		DESIGN UNITS METRIC		THIRD ANGLE PROJECTION		

RoHS Compliant

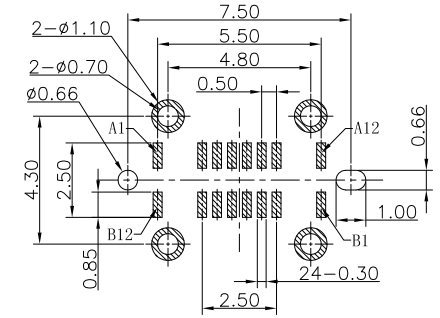
THIS DRAWING CONTAINS INFORMATION THAT IS PROPRIETARY TO ZDT TECHNOLOGY, AND SHOULD NOT BE USED WITHOUT WRITTEN PERMISSION

REV	ECN No.	DATE	REMARK
A	NEW	2022.02.14	NEW RELEASE
B	---	2023.06.13	新增LCP本色规格

WITH PICK UP COVER



AFTER MATING



RECOMMEND P.C.B LAYOUT(COMPONENT SIDE)
TOLERANCE FOR PCB LAYOUT IS ±0.05

USB TYPE C PIN ASSIGNMENTS

PIN NUMBER	SIGNAL NAME	PIN NUMBER	SIGNAL NAME
A1	GND	B12	GND
A4	VBUS	B9	VBUS
A5	CC1	B8	SBU2
A6	DP1	B7	DN2
A7	DN1	B6	DP2
A8	SBU1	B5	CC2
A9	VBUS	B4	VBUS
A12	GND	B1	GND

PART NO.: SEE THE PART NUMBER CODE		ZDT 深圳市中科兴达科技有限公司 SHENZHEN ZDT TECHNOLOGY CO., LTD		DRAWN BY SAM	DATE 2023.06.13
QUALITY SYMBOL = 0 ▽ = 0 = 0 ▽ = 0		GENERAL TOLERANCES (UNLESS SPECIFIED)		TITLE TYPE C母座16P直立式SMT H=8.8	
		x.xxxx	± ---	CHECKED BY JAY	
		x.xxx	± 0.10	DATE 2023.06.13	
		x.xx	± 0.20	APPROVED BY JACKY	
		x.x	± 0.30	DATE 2023.06.13	
		ANGULAR	± ---°	SCALE 1:1	
		DIMENSION STYLE MM ONLY		DESIGN UNITS METRIC	
		DWG.NO. CF116-010-02		SHEET NO. 2 OF 2	
				THIRD ANGLE PROJECTION	

frame size: A4