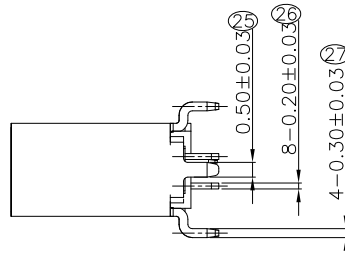
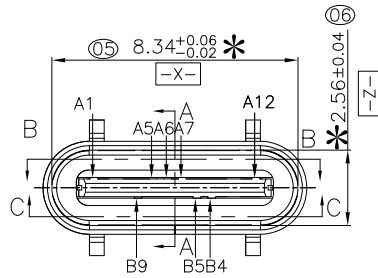
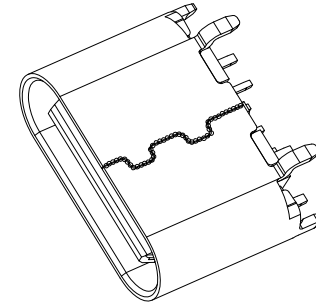
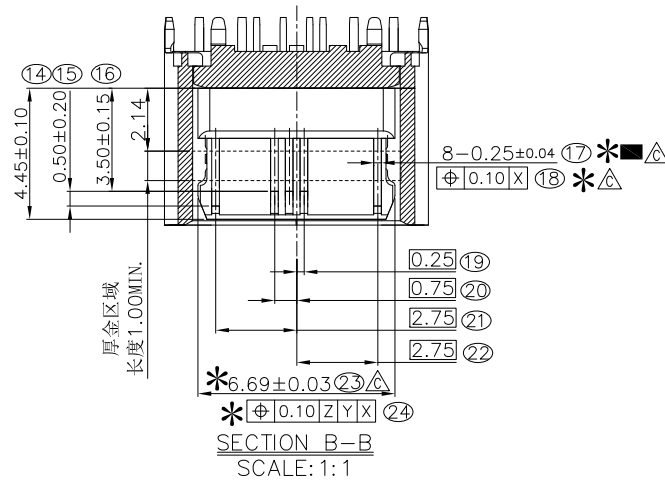
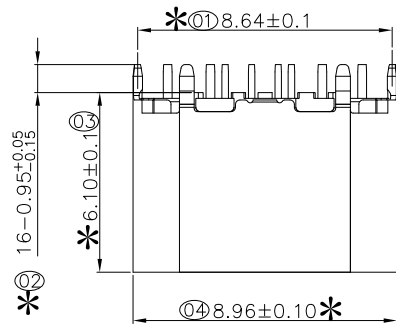


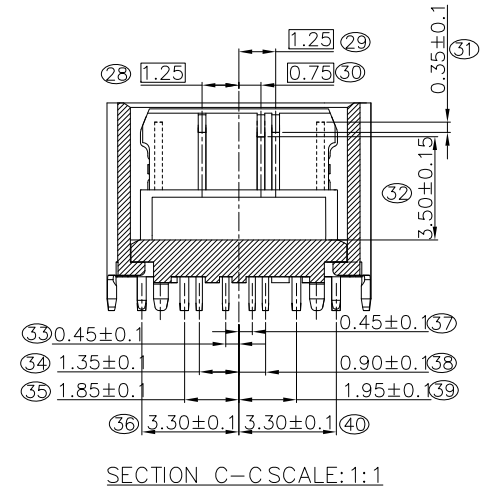
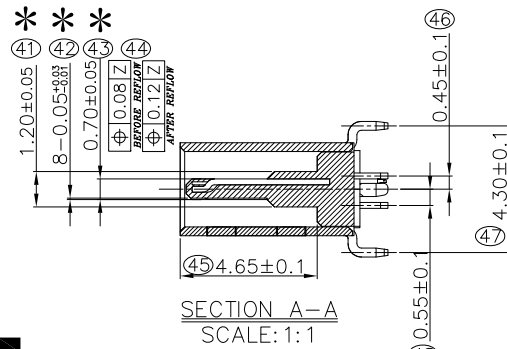
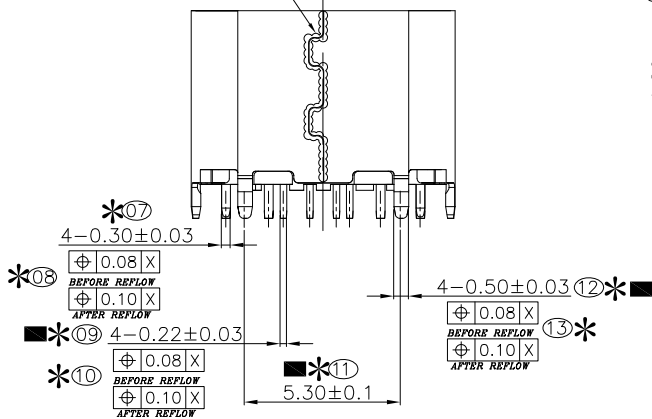
RoHS Compliant

THIS DRAWING CONTAINS INFORMATION THAT IS PROPRIETARY TO ZDT TECHNOLOGY. AND SHOULD NOT BE USED WITHOUT WRITTEN PERMISSION

REV	ECN No.	DATE	REMARK
A	NEW	2023.01.17	NEW RELEASE
B	--	2023.06.10	变更新料号



LASER WELDING AREA,  
SOLDER SPOT 20PCS MIN  
VERTICAL BINDING FORCE 100N MIN



PART NO.:  
SEE THE PART NUMBER CODE

**ZDT** 深圳市中科兴达科技有限公司  
SHENZHEN ZDT TECHNOLOGY CO., LTD

DRAWN BY: SAM  
DATE: 2023.06.10

QUALITY SYMBOL	GENERAL TOLERANCES (UNLESS SPECIFIED)
$\nabla=0$	x.xxxx ± ---
$\nabla=1$	x.xxx ± 0.10
$\nabla=2$	x.xx ± 0.25
$\nabla=3$	x.x ± 0.30
$\nabla=4$	ANGULAR ± ---°

TITLE	DWG.NO.	SHEET NO.
USB TYPE CF 8P直立式H=6.1(68)	CF108-001	1 OF 2
DIMENSION STYLE	DESIGN UNITS	SCALE
MM ONLY	METRIC	1:1

CHECKED BY	DATE
JAY	2023.06.10
APPROVED BY	DATE
JACKY	2023.06.10



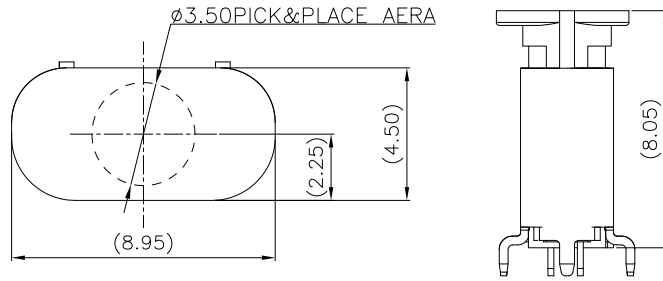
frame size: A4

RoHS Compliant

THIS DRAWING CONTAINS INFORMATION THAT IS PROPRIETARY TO ZDT TECHNOLOGY. AND SHOULD NOT BE USED WITHOUT WRITTEN PERMISSION

REV	ECN No.	DATE	REMARK
A	NEW	2023.01.17	NEW RELEASE
B	--	2023.06.10	变更新料号

CAP 示意图

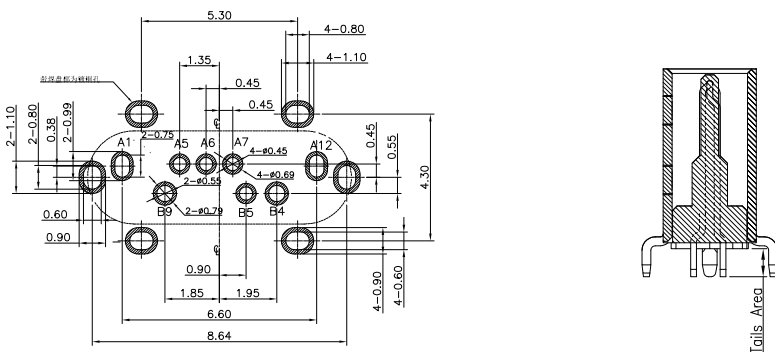


- NOTE:
- Material:
    - All Housing: LCP(Plical 628),Black,Thermoplastics,UL94V-0
    - Contact: Copper Alloy(C2680-H) T=0.2mm
    - Mid Plate: SUS301-H
    - Shell: SUS304-1/2H
    - Cap:LCP(Plical 628),Black,Thermoplastics,UL94V-0
  - FINISH:
    - Contact: Au 30u"Min & 80~300u" Nickel Plated on Contact Area, Au 3u"Min Plated on Solder Tails Area,
    - Mid-Plate: 80~300u" Nickel Over All.
    - Shell: 50~80u" Nickel Over All.
  - Electrical Characteristics:
    - Current Rating: 3A For Pin(A1,A12,B4,B9)
    - 1.25A For Pin(B5,A5)
    - 0.25A For Others Pin
    - Insulation Resistance: 100MΩ Min.
    - Contact Resistance: 40 mΩ Max.
    - Dielectric Withstanding Voltage: 500V/AC/2 Minute/0.1mA
  - Mechanical Characteristics:
    - Insertion Force: 6~20N
    - Extraction Force: Initial: 8~20N
    - Durability :10000 Cycles
    - Initial:5N to 20N;After10,000 insertion/extraction Cycles:6N to 20N
  - Operating Temperature: -35°C TO +85°C
  - DIMENSION MARK "⊗" IS FAI
  - DIMENSION MARK "\*" IS QIP
  - DIMENSION MARK "■" IS CPK
  - DIMENSION MARK "△" IS 100% CCD Detection

Ordering Information  
10.COMPLIANCE WITH ROHS REQUIREMENTS

11.PART NUMBER CODE:

NO.	PART NO.	REMARKS	PACKING
1	CF108-001SLB12R	LCP黑色接触镀金3u"其它GF	TAPE & REEL



RECOMMENDED PCB LAYOUT  
TOLERANCE UNSPECIFIED ±0.05

A1	GND		
A5	CC1		
A6	Dp1	B9	VBUS
A7	Dn1	B5	CC2
A12	GND	B4	VBUS
PIN	SIGNAL NAME	PIN	SIGNAL NAME

PART NO.: SEE THE PART NUMBER CODE		深圳市中科兴达科技有限公司 SHENZHEN ZDT TECHNOLOGY CO., LTD		DRAWN BY SAM	DATE 2023.06.10	
QUALITY SYMBOL = 0 ∇ = 0	GENERAL TOLERANCES (UNLESS SPECIFIED)		TITLE USB TYPE CF 8P直立式H=6.1(68)			
	x.xxxx	± ---	DWG.NO. CF108-001	SHEET NO. 2 OF 2	CHECKED BY JAY	DATE 2023.06.10
	x.xxx	± 0.10			APPROVED BY JACKY	DATE 2023.06.10
	x.xx	± 0.25	DIMENSION STYLE MM ONLY	DESIGN UNITS METRIC	SCALE 1:1	
	x.x	± 0.30				
x.x	± ---*				THIRD ANGLE PROJECTION	

frame size: A4