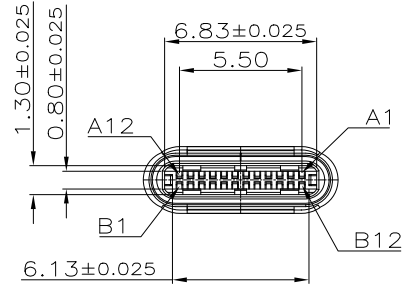
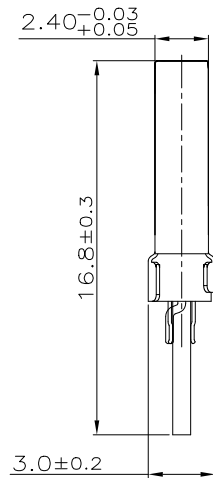
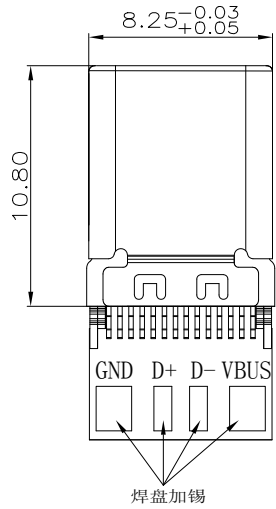
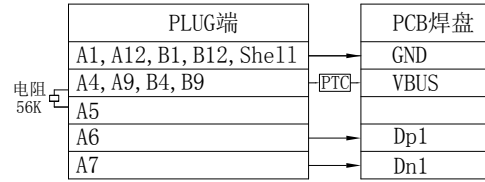


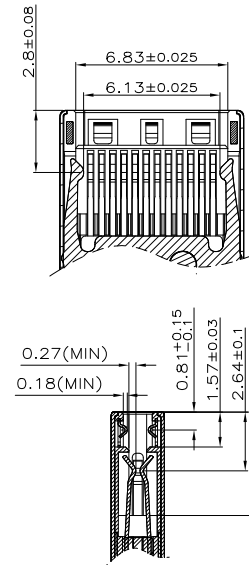
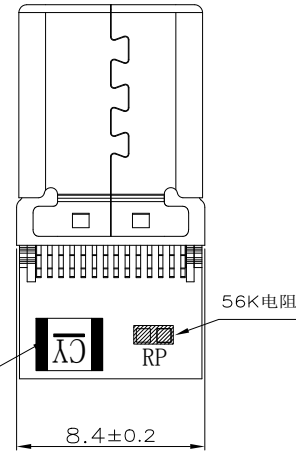
REV	ECN No.	DATE	REMARK
A	NEW	2021.06.01	NEW RELEASE



线路原理图



PTC 21V
(K)字样热敏电阻
(CY)字样热敏电阻



备注:

1.电性参数

电 流: 3.0A Max,
接触电阻: 最初40mΩ Max,
寿命测试后变化±10
绝缘阻抗: 100MΩ Min
耐 压: 100V AC

2. 机械参数

插入力: 5-20N MAX.
拔出力: 8-20N MIN.
耐久性: 10000 Cycles 500
cycles per hour

3. 沾锡性: 温度250±5°, 时间5±0.5s

4. PCB双层板

5. PART NUMBER CODE:(产品料号)

CM170-24 $\frac{L}{(1)} \frac{X}{(2)} \frac{02}{(3)} \frac{U}{(4)} - \frac{25}{(5)} \frac{T}{(6)} - 97$

(1) HOUSING MATERIAL:

L:LCP

(2) HOUSING COLOR:

B:BLACK

(3) CONTACTS PLATED:

02:半金锡3u"

(4) PACKING OPTIONS

U:管装

(5) PCB规格:

25:带板2.0 C-C,无电阻+10NF电容,带热敏电阻21V,3A

(6) 焊盘要求:

T=焊盘加锡

7	PCB	1PCS	PCB线路板 蓝油 T=0.8mm+电阻+(CY)PTC	---
6	Latch	1PCS	SUS 301 HV310-370;T=0.4	---
5	TERMINAL	24PCS	C7025 HV190-210;T=0.15	---
4	EMI PLATE	2PCS	SUS 304 HV310-370;T=0.10	---
3	FRONT SHELL	1PCS	SUS 304 HV310-370;T=0.15	---
2	EMI-Molding	2PCS	LCP+30%G.F BLACK UL94-V0	---
1	TERMINAL-Molding	2PCS	LCP+30%G.F BLACK UL94-V0	---
No.	NAME	Q'TY	MATERIAL	FINISH

MATERIAL NO.:
PART NUMBER CODE
REVIEW TABLE FOR DETAILS

QUALITY SYMBOL	0	0	0	GENERAL TOLERANCES (UNLESS SPECIFIED)	
				x.xxxx	± ---
				x.xxx	± 0.10
				x.xx	± 0.25
				x.x	± 0.30
ANGULAR	± --°				

ZDT 深圳市中科兴达科技有限公司
SHENZHEN ZDT TECHNOLOGY CO., LTD

TITLE	TYPE C公头冲压壳2.0 A-C 56K电阻 +(CY字样)PTC热敏电阻21V 3A焊盘加锡
DOCUMENT NO.	CM170-24-97
SHEET NO.	1 OF 1
DIMENSION STYLE	MM ONLY
DESIGN UNITS	METRIC
SCALE	5:1

DRAWN BY	SAM	DATE	2021.06.01
CHECKED BY	JAY	DATE	2021.06.01
APPROVED BY	JACKY	DATE	2021.06.01
THIRD ANGLE PROJECTION			