

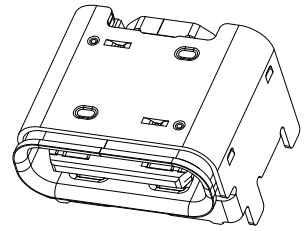
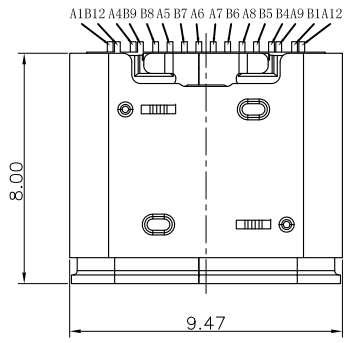
RoHS Compliant

THIS DRAWING CONTAINS INFORMATION THAT IS PROPRIETARY TO ZDT TECHNOLOGY. AND SHOULD NOT BE USED WITHOUT WRITTEN PERMISSION

TID NO. 10253



REV	ECN No.	DATE	REMARK
A	NEW	2022.01.23	NEW RELEASE
B	ECR202305-003	2023.05.22	外壳卡点0.45+0.03/-0.01改为0.40+0.03/-0.01
C	---	2023.11.11	增加TID号



NOTE:  
 1.ELECTRICAL PERFORMANCE:  
 1-1. CURRENT RATING:5 AMPS. FOR TOTAL VBUS/GND PINS;  
 1.25AMPS FOR CC PIN,0.25 AMPS. FOR ALL OTHER CONTACT.  
 1-2. VOLTAGE RATING:5V/20V DC/AC (RMS. MAX)  
 1-3. LLCR:.  
 VBUS & GND PINS AND OTHER PINS: 40MΩ/PIN MAX.  
 SHIELD:50MΩ/MAX.  
 LLCR MAX. CHANGE OF ALL PINS: 10MΩ.  
 1-4.INSULATION RESISTANCE: 100MΩ MIN  
 1-5.DIELECTRIC WITHSTAND VOLTAGE,AC 100V FOR 1 MINUTE.  
 2.MECHANICAL PERFORMANCE:  
 2-1.INSERTION FORCE: 5~20N.  
 2-2.EXTRACTION FORCE: 8~20N.  
 2-3.DURABILITY: 10000 CYCLES.  
 3.ENVIRONMENTAL PERFORMANCE:  
 OPERATING TEMPERATURE: -25°C~+85°C.  
 4.IR REFLOW:  
 THE PEAK TEMPERATURE ON THE BOARD SHALL BE MAINTAINED FOR 10 SECONDS AT 260°C.

5. PART NUMBER CODE:

NO.	PART NO.	REMARKS	PACKING
2	CF216-007SCB12VR-02	PA9T黑色接触镀金3u"其它GF	TAPE & REEL+真空包装 (特殊客户指定包装)
1	CF216-007SCB12R-02	PA9T黑色接触镀金3u"其它GF	TAPE & REEL

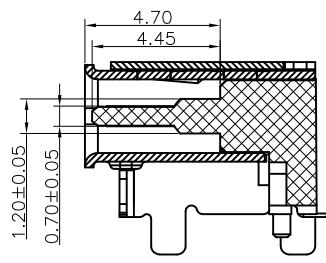
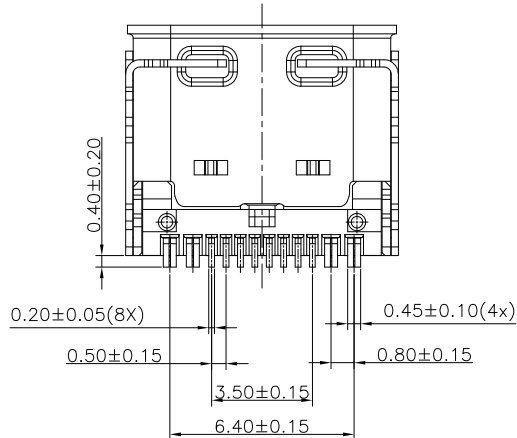
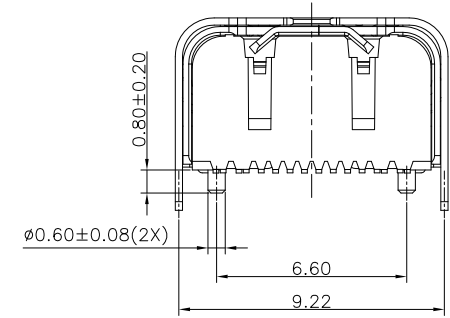
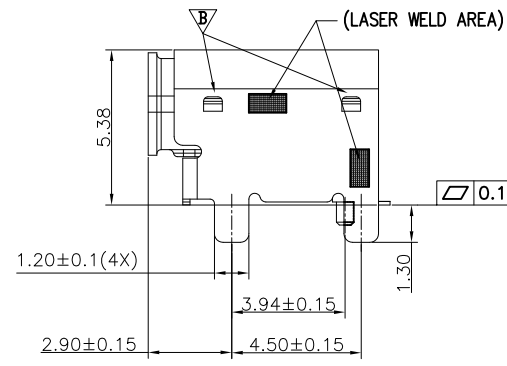
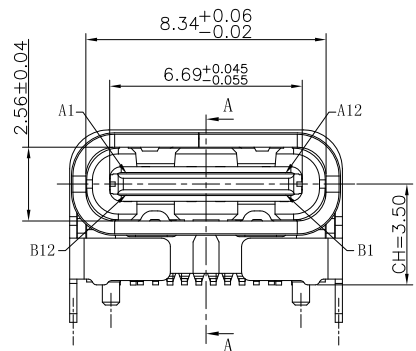


TABLE:

NO	PART	Q'TY	Material
1	OUT SHELL	1	Stainless Steel SUS304 T=0.25mm, NI 30u" MIN PLATED
2	INNER SHELL	1	Stainless Steel SUS304 T=0.30mm, NI 30u" MIN PLATED
3	Mid Plate	1	Stainless Steel SUS301 T=0.15mm,CLEAR ONLY
4	CONTACT	16	COPPER STEEL C18400, AU3U"PLATED ON CONTACT AREA G/F PLATED ON SOLDER AREA; NICKEL 50U"MIN UNDERPLATING OVER ALL.
5	HOUSING	1	PA9T BLACK UL94 V-0

PART NO.: SEE THE PART NUMBER CODE

**ZDT** 深圳市中科兴达科技有限公司  
SHENZHEN ZDT TECHNOLOGY CO.,LTD

QUALITY SYMBOL: 0, 0.1, 0.2, 0.3, ANGULAR

GENERAL TOLERANCES:  
 x.xxxx ± ---  
 x.xxx ± 0.10  
 x.xx ± 0.20  
 x.x ± 0.30  
 ANGULAR ± ---°

TITLE: TYPE C 16P母座 单排SMT垫高款CH=3.5

THIRD ANGLE PROJECTION

UNIT: mm

SCALE: 1:1

SHEET NO.: 1 OF 2

DWG.NO.: CF216-007-02

DRAWN BY: SAM  
 CHECKED BY: JAY  
 APPROVED BY: JACKY

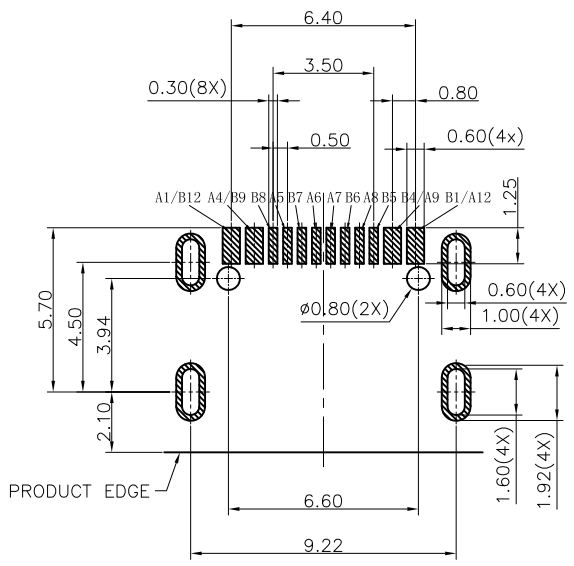
frame size: A4

RoHS Compliant 

THIS DRAWING CONTAINS INFORMATION THAT IS PROPRIETARY TO ZDT TECHNOLOGY. AND SHOULD NOT BE USED WITHOUT WRITTEN PERMISSION

TID NO. 10253


REV	ECN No.	DATE	REMARK
A	NEW	2022.01.23	NEW RELEASE
B	ECR202305-003	2023.05.22	外壳卡点0.45+0.03/-0.01改为0.40+0.03/-0.01
C	---	2023.11.11	增加TID号



RECOMMEND P.C.B LAYOUT(COMPONENT SIDE)  
TOLERANCE FOR PCB LAYOUT IS ±0.05

PIN DEFINITION:

PIN No.	A1	A4	A5	A6	A7	A8	A9	A12
	GND	VBUS	CC1	D+	D-	SBU1	VBUS	GND
PIN No.	B12	B9	B8	B7	B6	B5	B4	B1
	GND	VBUS	SBU2	D-	D+	CC2	VBUS	GND

PART NO.: SEE THE PART NUMBER CODE		 深圳市中科兴达科技有限公司 SHENZHEN ZDT TECHNOLOGY CO., LTD		DRAWN BY: SAM	
QUALITY SYMBOL	0	GENERAL TOLERANCES		TITLE	
	0	x.xxxx	± ---	TYPE C 16P母座 单排SMT垫高款CH=3.5	
	0	x.xxx	± 0.10	THIRD ANGLE PROJECTION	
	0	x.xx	± 0.20	UNIT	SCALE
	0	x.x	± 0.30	mm	1:1
0	ANGULAR	± ---°	SHEET NO.	DWG.NO.	
			2 OF 2	CF216-007-02	