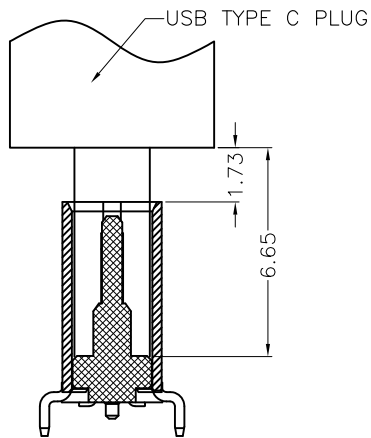
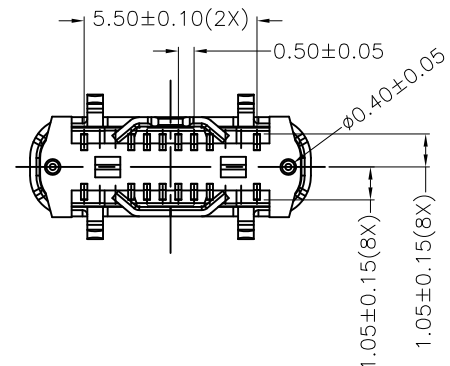
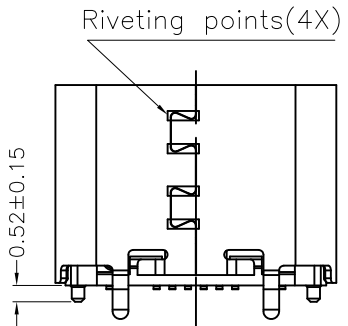
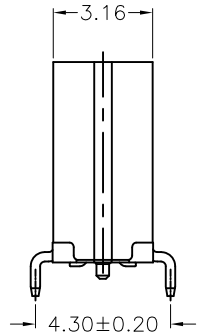
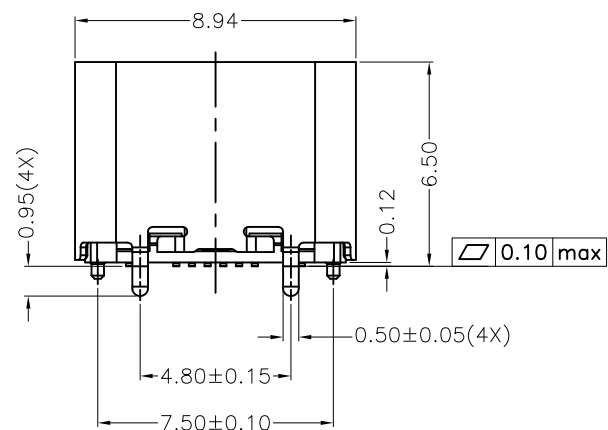
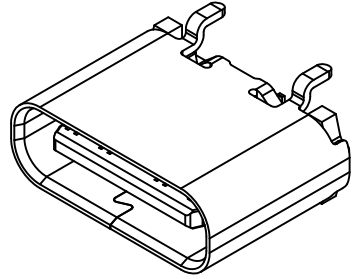
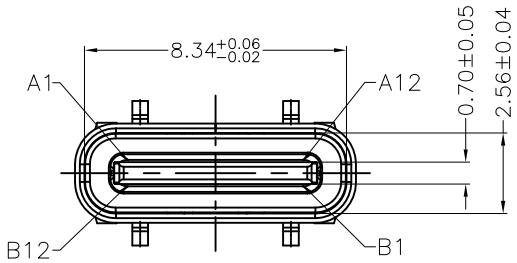


RoHS Compliant

THIS DRAWING CONTAINS INFORMATION THAT IS PROPRIETARY TO ZDT TECHNOLOGY, AND SHOULD NOT BE USED WITHOUT WRITTEN PERMISSION

TYPE C协会认证TID NO. 5304

REV	ECN No.	DATE	REMARK
A	NEW	2020.08.03	NEW RELEASE
B	ECR231004-001	2023.10.04	优化产品结构满足自动机生产和模具生产需求



FEMALE AND MALE MATCHING DRAWING

NOTE:

- MATERIAL SPECIFICATION:
 - HOUSING: HIGH TEMPERATURE RESISTANT PLASTIC(LCP), UL94 V-0. COLOR: BLACK.
 - CONTACTS: COPPER ALLOY T=0.12mm
 - MID PLATE: STAINLESS STEEL(SUS301)T=0.15mm
 - SHELL: STAINLESS STEEL(SUS304)T=0.30mm
- PLATING SPECIFICATION:
 - CONTACTS: Ni 50u" MIN. UNDER PLATED OVER ALL. Au PLATED ON THE MATING AREA OF CONTACT. (GOLD PLATING THICKNESS FOLLOW THE P/N) G/F PLATED ON THE SOLDER AREA.
 - SHELL: Ni 30u" MIN. UNDER PLATED OVER ALL.
 - MID PLATE: CLEAR ONLY
- MECHANICAL PERFORMANCE,
 - INSERTION FORCE: 0.5~2.0kgf.
 - EXTRACTION FORCE: 0.8kgf~2.0kgf. 0.6kgf~2.0kgf. AFTER DURABILITY TEST.
 - DURABILITY: 10000 CYCLES.
- ELECTRICAL PERFORMANCE,
 - CURRENT RATING: 5.0A VOLTAGE RATING: 5.0V/20V
 - LLCR: VBUS & GND PINS AND OTHER PINS: 40mΩ/PIN MAX. SHIELD: 50mΩ/MAX. LLCR MAX. CHANGE OF ALL PINS: 10mΩ.
 - INSULATION RESISTANCE: 100MΩ MIN
 - DIELECTRIC WITHSTAND VOLTAGE, AC 100V FOR 1 MINUTE.
- ENVIRONMENTAL PERFORMANCE: OPERATING TEMPERATURE: -25°C~+85°C.
- IR REFLOW: THE PEAK TEMPERATURE ON THE BOARD SHALL BE MAINTAINED FOR 10 SECONDS AT 260°C.
- 符合ROHS & HF要求
- PART NUMBER CODE: (产品料号)
CF136-16 X X XX X - 01
 包装要求:
 R: 卷装
 CONTACTS PLATED:
 12: 接触镀金3u"其它GOLD FLASH
 HOUSING COLOR:
 B: BLACK
 HOUSING MATERIAL:
 L: LCP

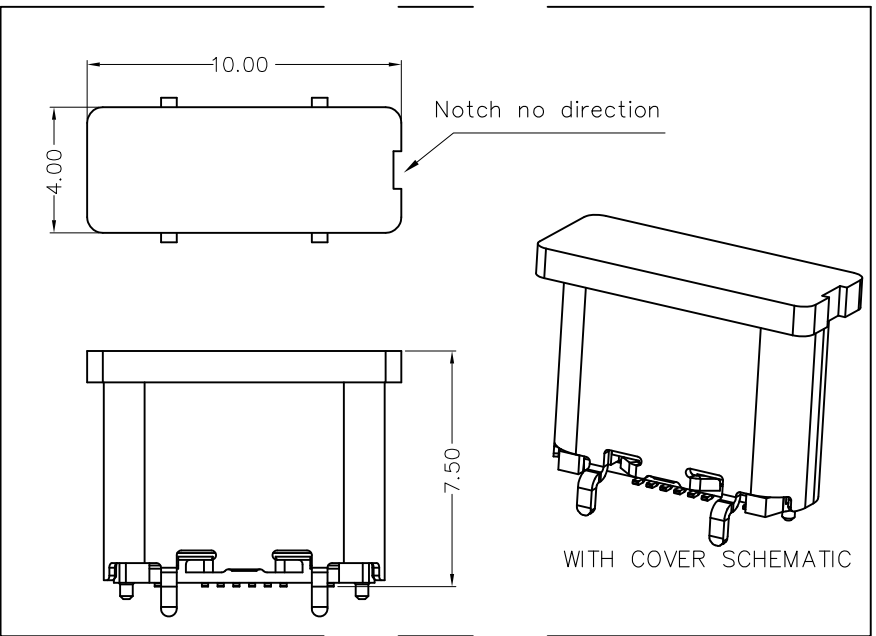
PART NO.: SEE THE PART NUMBER CODE		深圳市中科兴达科技有限公司 SHENZHEN ZDT TECHNOLOGY CO., LTD		DRAWN BY: SAM	
QUALITY SYMBOL	0	GENERAL TOLERANCES		CHECKED BY: JAY	
	▽	x.xxxx	± ---	APPROVED BY: JACKY	
	▽	x.xxx	± 0.10	DWG.NO. CF136-16-01	
	▽	x.xx	± 0.25	frame size: A4	
	▽	x.x	± 0.30		
▽	ANGULAR	± ---			
TITLE		THIRD ANGLE PROJECTION	UNIT mm	SCALE 1:1	SHEET NO. 1 OF 2

RoHS Compliant

THIS DRAWING CONTAINS INFORMATION THAT IS PROPRIETARY TO ZDT TECHNOLOGY. AND SHOULD NOT BE USED WITHOUT WRITTEN PERMISSION

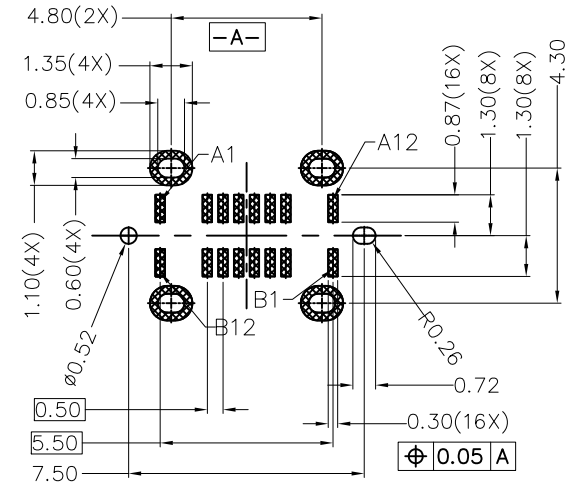
REV	ECN No.	DATE	REMARK
A	NEW	2020.08.03	NEW RELEASE
B	ECR231004-001	2023.10.04	优化产品结构满足自动机生产和模具生产需求

TYPE C协会认证TID NO. 5304



USB TYPE-C PIN ASSIGNMENTS

PIN NUMBER	SIGNAL NAME	PIN NUMBER	SIGNAL NAME
A1	GND	B12	GND
A4	Vbus	B9	Vbus
A5	CC1	B8	SBU2
A6	Dp1	B7	Dn2
A7	Dn1	B6	Dp2
A8	SBU1	B5	CC2
A9	Vbus	B4	Vbus
A12	GND	B1	GND



RECOMMENDED PCB LAYOUT(TOP VIEW)
THICKNESS 0.8±0.10MM; DEFAULT TOLERANCE: ±0.05

PART NO.: SEE THE PART NUMBER CODE		ZDT 深圳市中科兴达科技有限公司 SHENZHEN ZDT TECHNOLOGY CO., LTD		DRAWN BY: SAM	
QUALITY SYMBOL 0 = 0	GENERAL TOLERANCES		TITLE		
	x.xxxx	± ---	USB TYPE C FEMALE 16PIN VERTICAL TYPE SHELL H6.50mm		
	x.xxx	± 0.10			
	x.xx	± 0.25			
	x.x	± 0.30			
ANGULAR	± ---°				
		THIRD ANGLE PROJECTION	UNIT mm	SCALE 1:1	SHEET NO. 2 OF 2
				DWG.NO. CF136-16-01	

frame size: A4